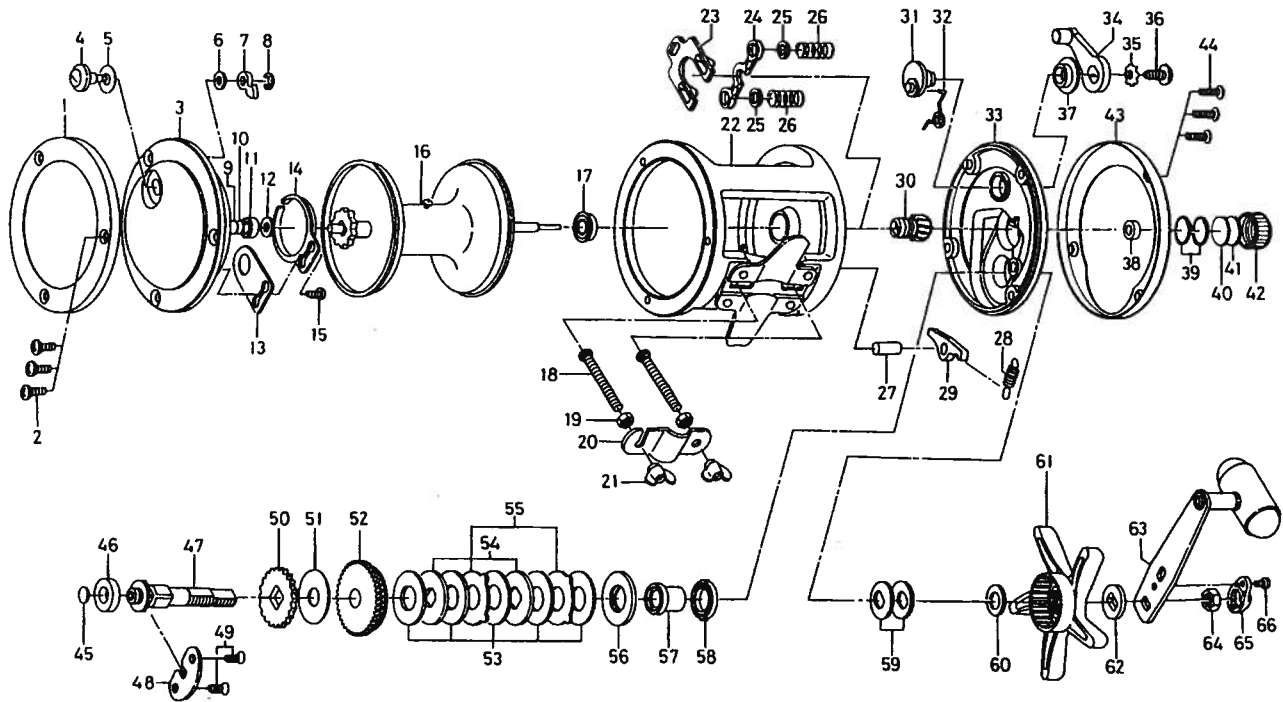


CONVENTIONAL REEL

SEALINE 40HSD / 50HSD



Key No.	Parts No.	Parts Name	Key No.	Parts No.	Parts Name
1	G08-5801	L/S OUTER RING	37	B35-2601	CLUTCH LEVER SCREW HOLDER
2	G12-1801	L/S PLT SCREW	38	E28-0201	BUSHING A
3	G08-5402	L/S PLT	39	B05-5201	O RING
4	541-6501	CLICK BUTTON	40	375-7501	SPACER B
5	375-9301	CLICK BUTTON WASHER	41	B17-5503	SPACER C
6	375-1101	CLICK PAWL WASHER	42	E31-5403	CAST CONTROL CAP
7	030-6222	CLICK PAWL	43	G08-2701	R/S OUTER RING
8	320-1402	CLICK PAWL RET	44	E31-7402	R/S PLT SCREW
9	375-7404	BEARING WASHER A	45	F73-3501	DRIVE SHAFT WASHER A
10	375-7411	BEARING WASHER B	46	B73-8001	BUSHING B
11	637-2101	BALL BEARING A	47	G08-3701	DRIVE SHAFT
12	F13-2602	SPACER A	48	F09-8401	DRIVE SHAFT RET
13	F13-1801	CLICK SPRING RET	49	B39-5506	DRIVE SHAFT RET SCREW
14	160-7922	CLICK SPRING	50	G08-3801	A/R RATCHET
15	351-7701	CLICK SPRING SCREW	51	G08-3901	DRIVE SHAFT WASHER B
16	G10-1501	SPOOL	52	G10-7101	DRIVE GEAR
17	G00-7601	BALL BEARING B	53	F79-6201	DRAG WASHER
18	353-9801	CLAMP BOLT	54	G08-4201	KEY WASHER A
19	341-9701	ROD BRACE NUT	55	F79-6103	EARED WASHER
20	041-5601	ROD BRACE	56	G08-4301	KEY WASHER B
21	342-2111	CLAMP NUT	57	G08-4401	GEAR SHAFT COLLAR
22	G10-1301	FRAME	58	F86-0901	BUSHING C
23	G08-3401	YOKE PLT	59	E25-3501	DRAG SPRING WASHER
24	G08-3501	YOKE	60	373-7807	SPACING SLEEVE
25	E03-7706	YOKE WASHER	61	G11-6701	STAR DRAG
26	F93-5201	YOKE SPRING	62	E25-3901	FRICTION WASHER
27	E30-7701	A/R PAWL PIN	63	G08-4801	HANDLE
28	F29-8801	A/R PAWL SPRING	64	B86-2102	HANDLE NUT
29	B12-0702	A/R PAWL	65	E44-0001	HANDLE NUT PLT
30	G08-3601	PINION GEAR	66	351-1801	HANDLE NUT PLT SCREW
31	G08-2801	CLUTCH CAM			
32	F38-5801	CLUTCH SPRING			
33	G08-2401	R/S PLT			
34	782-5401	CLUTCH LEVER			
35	160-8001	CLUTCH LEVER LOCK WASHER			
36	363-5301	CLUTCH LEVER SCREW			

50HSD Special Parts		
Key No.	Parts No.	Parts Name
16	G08-5601	SPOOL
22	G08-3101	FRAME