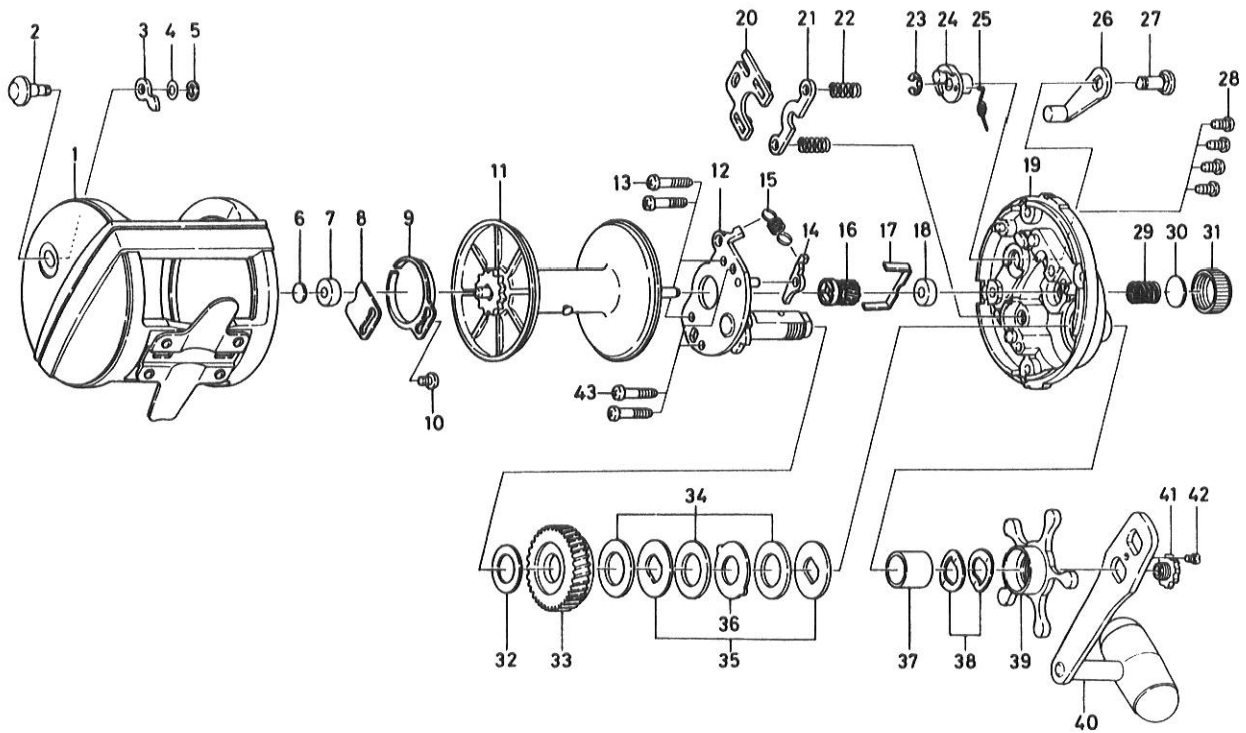


MULTIPLYING REEL – Sealine SL250H *NEW*



Key

No.	Part No.	Part Name
1	L12-0901	Frame assembly
2	541-6502	Click button
3	030-6221	Click pawl
4	373-1600	Click pawl washer
5	320-1402	Click pawl retainer
6	375-7403	Spacer A
7	637-5601	Bush
8	E04-3601	Click spring retainer
9	160-7922	Click spring
10	B83-4402	Click spring screw
11	E04-9802	Spool assembly
12	E04-3101	Set plate
13	E04-3301	Set plate screw A
14	B12-0701	Anti-reverse pawl
15	145-2801	Anti-reverse pawl spring
16	E04-9501	Pinion gear
17	E04-2801	Ball bearing retainer
18	633-8811	Ball bearing
19	E04-2602	Right side plate
20	041-5701	Yoke plate
21	041-5801	Yoke
22	144-7101	Yoke spring

Key

No.	Part No.	Part Name
23	320-7601	Clutch lever retainer
24	E04-2901	Clutch cam
25	E04-9401	Clutch spring
26	782-5404	Clutch lever
27	E04-3002	Clutch lever pin
28	E04-3702	Right side plate screw
29	145-3101	Spool tension spring
30	375-7501	Spacer B
31	382-0302	Cast control cap
32	375-2901	Drive shaft washer
33	E05-3101	Drive gear
34	375-9905	Drag washer
35	376-3404	Key washer
36	376-3501	Eared washer
37	501-9312	Spacing sleeve
38	151-8701	Friction washer
39	782-5307	Star drag
40	L12-0701	Handle assembly
41	353-3303	Handle screw A
42	353-2811	Handle screw B
43	B83-5002	Set plate screw B

NEW PARTS LIST. NOTE: New model has blue line. Old model is red line.