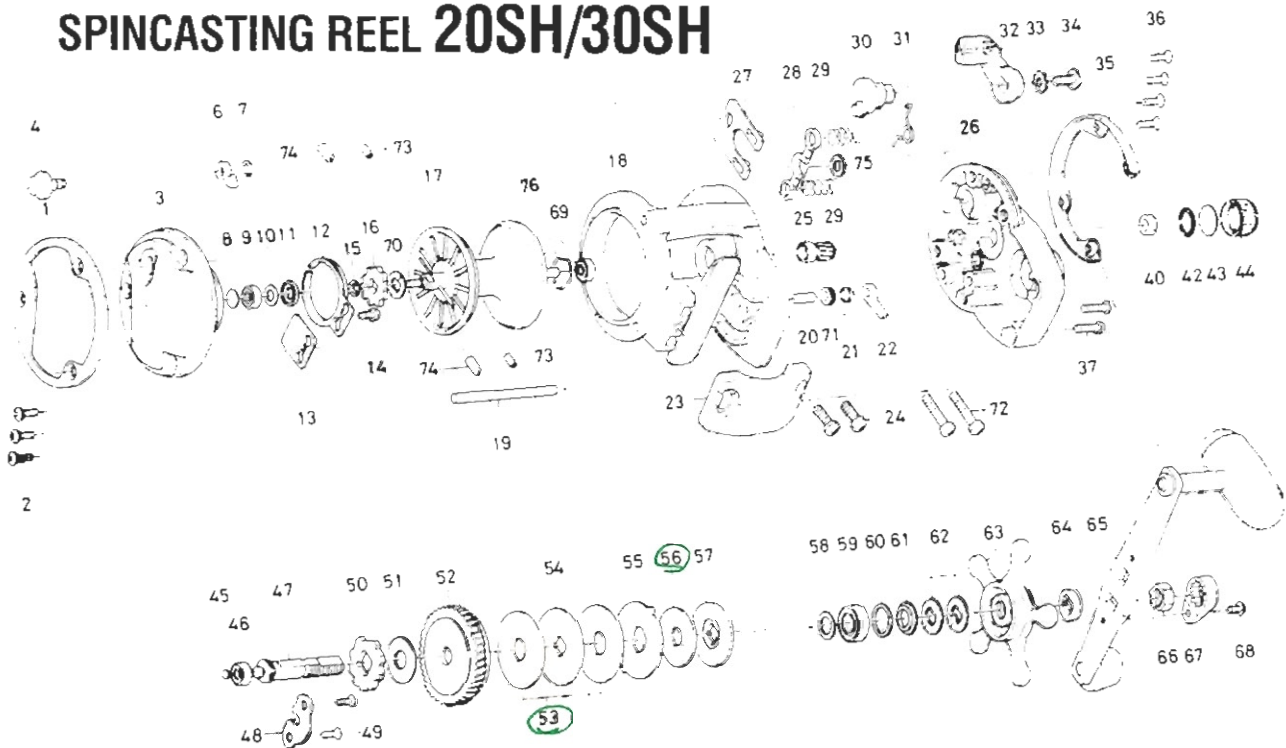


Please order by part number, not key number.

# SPINCASTING REEL 20SH/30SH



## \*NEW PARTS

Key No.	Parts No.	Parts Name	Key No.	Parts No.	Parts Name
1	E31-8201	Left side outer ring	43	375-7501	Spacer A
2	E31-7401	Left side plate screw	44	E31-5401	Cast control cap
3	E34-5201	Left side plate	45	B12-0201	Drive shaft washer A
4	E36-1301	Click button	46	835-8604	Ball bearing B
6	030-6612	Click pawl	47	E31-6601	Drive shaft
7	320-1402	Click pawl retainer	48	E19-9401	Drive shaft retainer
8	375-7405	Spacer	49	E31-6701	Drive shaft retainer screw
9	637-4601	Ball bearing A	50	E25-2903	Anti-reverse ratchet
10	E32-6601	Bearing washer A	51	374-6604	Drive shaft washer B
11	E31-8001	Ball bearing collar A	52	E31-6801	Drive gear
12	160-7922	Click spring	53	E31-6901	Drag washer A
13	E36-1201	Click spring retainer	54	E31-7001	Key washer A
14	B83-4402	Click spring screw	55	E31-7101	Eared washer
15	320-1402	Click gear retainer	56	E32-6501	Drag washer B
16	B21-6701	Click gear	57	E31-7201	Key washer B
17	E34-5102	Spool assembly	58	373-7807	Bearing washer B
18	E52-7801	Frame assembly	59	B62-8601	Ball bearing C
19	E31-6001	Stabilizer bar	60	B68-4402	Bearing washer C
20	E25-2901	Anti-reverse pawl pin	61	E25-3301	Ball bearing collar B
21	E31-6501	Anti-reverse pawl spring	62	E25-3501	Drag spring washer
22	E31-6401	Anti-reverse pawl	63	E25-3602	Star drag
23	E31-8301	Rod clamp	64	E25-3901	Spacing sleeve
24	E31-8401	Clamp bolt A	65	E17-5501	Handle assembly
25	E31-8201	Pinion gear	66	B86-2101	Handle nut
26	E31-5103	Right side plate	67	B86-2301	Handle nut plate
27	E31-6101	Yoke plate	68	352-2503	Handle nut plate screw
28	E36-1101	Yoke	69	F21-6101	Ball bearing D
29	E33-5301	Yoke spring	70	E36-1401	Click spring washer
30	E31-5501	Clutch cam	71	F00-8001	Spring holder
31	F02-0301	Clutch spring	73	B35-2701	Brake collar A
32	E24-9802	Clutch lever	74	B35-2901	Brake collar B
33	160-8001	Clutch lever lock washer	75	E03-7701	Yoke washer
34	E00-7602	Clutch lever screw	76	B35-8701	Beating retainer
35	E31-7301	Right side outer ring			
36	E31-7401	Right side plate screw A			
37	351-8502	Right side plate screw B			
40	B54-6401	Bushing A			
42	B05-5201	O ring			
			<b>Sealine 30SH Special Parts</b>		
			3	E34-5203	Left side plate
			17	E40-4901	Spool assembly
			18	E40-4803	Frame assembly
			19	E40-4601	Stabilizer bar
			72	E34-4401	Clamp bolt B