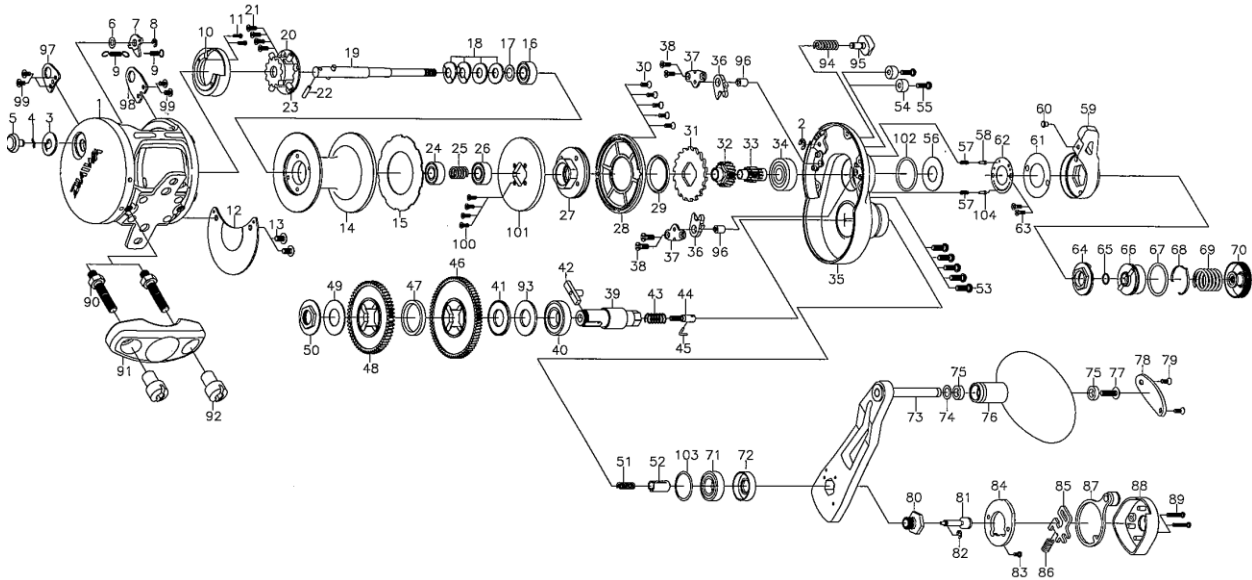




CONVENTIONAL REEL

# SALTIGA LD60-2SPEED

Please order by parts number, not key number  
 Veuillez indiquer le numéro de la pièce (Non "Key" No.)



| Key No. | Part No. | Part Name.            | Key No. | Part No. | Part Name.            |
|---------|----------|-----------------------|---------|----------|-----------------------|
| 1       | E67-8801 | FRAME                 | 50      | E68-3101 | DRIVE SHAFT NUT       |
| 2       | B33-9801 | RETAINER(A)           | 51      | E68-2401 | DRIVE SHAFT SPRING(B) |
| 3       | E67-9201 | CLICK PLATE           | 52      | E68-2301 | COLLAR(A)             |
| 4       | E65-6501 | CLICK SPRING(A)       | 53      | E64-4502 | SCREW(F)              |
| 5       | E67-9101 | CLICK BUTTON          | 54      | E64-4301 | COLLAR(B)             |
| 6       | E67-9401 | CLICK BUTTON WASHER   | 55      | E59-1601 | SCREW(G)              |
| 7       | E67-9301 | CLICK PAWL            | 56      | E68-3901 | WASHER(B)             |
| 8       | 320-1402 | CLICK PAWL RETAINER   | 57      | E64-3901 | SPRING(B)             |
| 9       | E67-9501 | CLICK SPRING(B)       | 58      | E65-9901 | PIN                   |
| 10      | E67-1401 | RING HOLDER           | 59      | E68-4101 | DRAG LEVER            |
| 11      | E67-1501 | SCREW(A)              | 60      | E68-4201 | COLLAR (C)            |
| 12      | E67-9601 | FRAME PLATE           | 61      | E68-4401 | DRAG LEVER PLATE(A)   |
| 13      | F50-5703 | SCREW(B)              | 62      | E68-4301 | DRAG LEVER PLATE(B)   |
| 14      | E67-9801 | SPOOL                 | 63      | E64-1501 | SCREW(H)              |
| 15      | E67-9901 | DRAG WASHER           | 64      | E68-4501 | PRE-SET CAM(A)        |
| 16      | E68-0301 | BALL BEARING(A)       | 65      | E68-4601 | RING                  |
| 17      | 373-7816 | WASHER(A)             | 66      | E68-4701 | PRE-SET CAM(B)        |
| 18      | E68-0201 | DRAG SPRING WASHER    | 67      | 171-1001 | "O"RING(A)            |
| 19      | E68-0701 | MAIN SHAFT            | 68      | E68-4801 | CLICK LEAF SPRING     |
| 20      | E68-0801 | DRAG CLICK CAP        | 69      | H48-4801 | DRAG KNOB SPRING      |
| 21      | G29-7001 | SCREW (C)             | 70      | E68-4901 | PRE-SET DRAG KNOB     |
| 22      | E68-1401 | PIN                   | 71      | G43-9401 | BALL BEARING(F)       |
| 23      | B35-2701 | BRAKE COLLAR          | 72      | E68-5001 | COLLAR                |
| 24      | G53-5101 | BALL BEARING(B)       | 73-79   | E68-5101 | HANDLE ASSEMBLY       |
| 25      | E68-0601 | SPRING(A)             | 80      | E68-5401 | HANDLE SCREW(A)       |
| 26      | G53-5101 | BALL BEARING (C)      | 81      | E68-5501 | HANDLE BUTTON         |
| 27      | E68-1001 | DRAG METAL            | 82      | 320-5901 | RETAINER(B)           |
| 28      | E68-1201 | DRAG WASHER COVER     | 83      | 350-8912 | SCREW(I)              |
| 29      | E68-1301 | PACKING               | 84      | H42-6101 | HANDLE CAP(A)         |
| 30      | E66-8901 | SCREW(D)              | 85      | H42-6301 | PLATE                 |
| 31      | E68-3401 | DRAG RATCHET          | 86      | H42-6201 | SPRING(C9)            |
| 32      | E68-3301 | PINION GEAR(A)        | 87      | H42-6401 | HANDLE LEVER          |
| 33      | E68-3201 | PINION GEAR(B)        | 88      | H56-2101 | HANDLE CAP(B)         |
| 34      | E68-5601 | BALL BEARING(D)       | 89      | G04-0815 | HANDLE SCREW(B)       |
| 35      | E68-1601 | RIGHT SIDE PLATE      | 90      | H60-0701 | CLAMP BOLT            |
| 36      | E68-3501 | DRAG PAWL             | 91      | J01-4401 | ROD CLAMP             |
| 37      | E64-3701 | DRAG PAWL RETAINER    | 92      | H60-0801 | CLAMP NUT             |
| 38      | E64-3801 | SCREW(E)              | 93      | E68-2601 | DRIVE GEAR COLLAR(D)  |
| 39      | E68-1901 | DRIVE SHAFT(B)        | 94      | E68-6201 | SPRING(D)             |
| 40      | F64-1602 | BALL BEARING          | 95      | E68-1701 | PUSH BUTTON           |
| 41      | E68-2701 | DRIVE GEAR COLLER(A)  | 96      | E68-3801 | PIN(B)                |
| 42      | E68-2001 | DRIVE SHAFT PIN(B)    | 97      | E67-7201 | HARNES LUG(A)         |
| 43      | E68-2101 | DRIVE SHAFTSPRING(A)  | 98      | E67-7101 | HARNES LUG(B)         |
| 44      | E68-2201 | DRIVE SHAFT SCREW     | 99      | E68-5901 | SCREW                 |
| 45      | E66-6501 | DRIVE SHAFT PIN ©     | 100     | E68-6101 | DRAG METAL SCREW      |
| 46      | E68-2801 | DRIVE GEAR(A)         | 101     | E68-1101 | DRAG PLATE            |
| 47      | E68-2901 | DRIVE GEAR COLLER(B)  | 102     | E68-6301 | "O"RING(B)            |
| 48      | E68-3001 | DRIVE GEAR(B)         | 103     | E68-6500 | WASHER(D)             |
| 49      | E68-2701 | DRIVE GEAR COLLER (C) | 104     | E64-4001 | PIN (C)               |