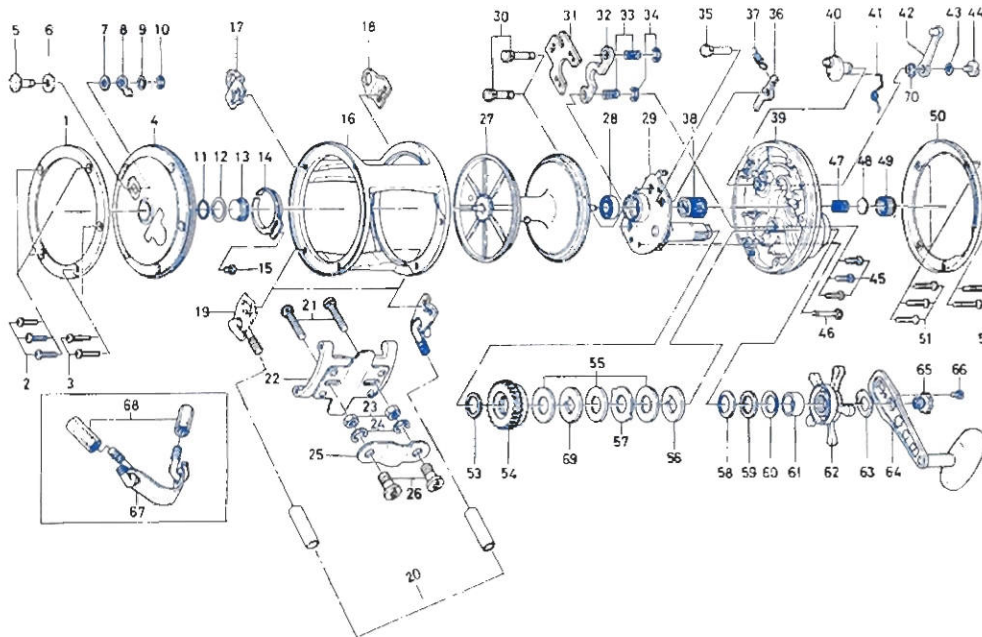


Conventional Reel

**Sealine 900H**



**Key No.**

Key No.	Parts No.	Parts Name
1	171-8101	L. S. ring
2	354-1601	L. S. plate screw A
3	B19-1101	L. S. plate screw B
4	760-7203	L. S. plate for 900H
5	541-6311	Click button
6	375-9201	Click button washer
7	375-9301	Click claw washer A
8	030-6111	Click claw
9	373-2700	Click claw washer B
10	320-7601	Click claw retainer
11	171-1001	Friction ring
12	375-9802	Case metal washer
13	720-2711	Case metal
14	160-7802	Click spring
15	352-2201	Click spring screw
16	701-7302	Frame
17	041-9501	Harness lug
18	041-9501	Harness lug
19	783-3101	Rod brace lug
20	B22-8801	Brace lug protector
21	364-1101	Rod clamp screw
22	783-3001	Stand
23	341-9701	Rod clamp nut
24	321-1101	Clamp retainer
25	041-9901	Rod clamp
26	342-5301	Rod clamp locking nut
27	734-7401	Spool for 900H
28	637-6101	Ball bearing
29	783-3302	Set plate
30	051-5611	Set plate pin A
31	041-9401	Eccentric jack
32	041-4801	Pinion yoke
33	144-8101	Clutch spring
34	320-1611	Clutch spring retainer
35	051-5511	Set plate pin B

**Key No.**

Key No.	Parts No.	Parts Name
36	111-9301	Anti-reverse claw
37	144-9511	Anti-reverse claw spring
38	750-6501	Pinion gear
39	760-7302	R. S. plate
40	461-6911	Eccentric cam
41	144-4701	Eccentric cam spring
42	781-8621	Clutch lever
43	160-8001	Clutch lever lock washer
44	363-5301	Clutch lever screw
45	353-9701	Set plate screw A
46	B15-9101	Set plate screw B
47	145-3101	Spool adjusting spring
48	375-7501	Spool adjusting cap metal
49	382-0301	Spool adjusting cap
50	171-8001	R. S. ring
51	354-1601	R. S. plate screw A
52	B19-1101	R. S. plate screw B
53	370-4512	Drive gear washer
54	414-3002	Drive gear
55	376-4701	Drag washer A
56	376-4801	Drag washer D
57	376-4901	Drag washer C
58	151-5212	Tension spring
59	375-3511	Drag spring washer
60	151-5211	Tension spring
61	501-8911	Spacing sleeve
62	782-4502	Star drag
63	151-9801	Handle washer
64	748-1101	Handle
65	781-2301	Handle screw
66	353-2811	Handle lock screw
67	783-3201	Rod brace
68	342-5201	Rod brace nut
69	376-4802	Drag washer B
70	B35-2601	Clutch lever screw holder