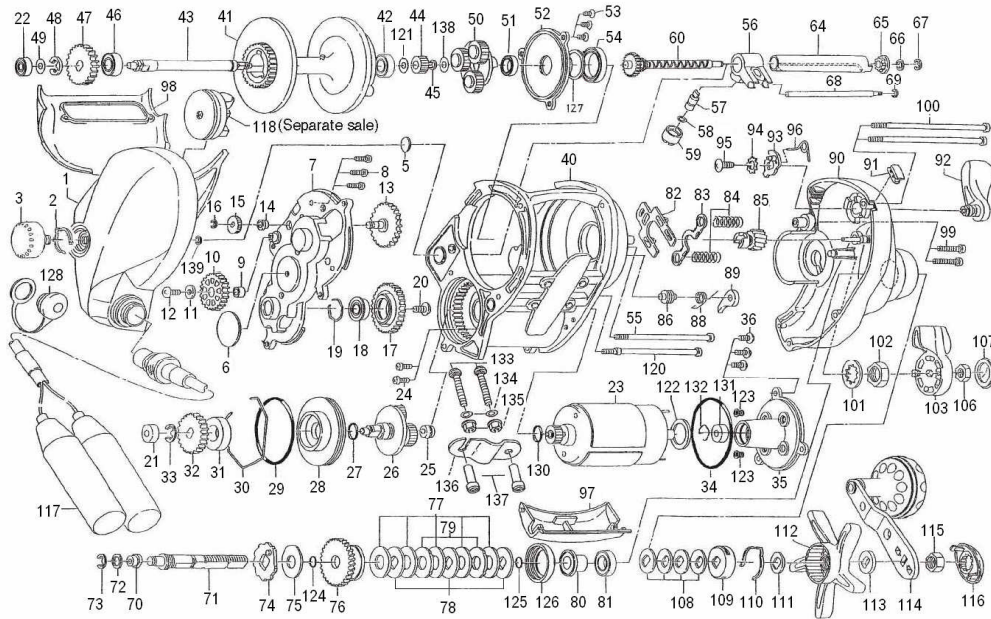


Tanacom Ball 10000



Key			Key			Key		
No.	Parts No.	Parts Name	No.	Parts No.	Parts Name	No.	Parts No.	Parts Name
1	G37-9906	IC MODULE L/S PLT SET	48	320-1611	SPOOL GEAR RET	94	160-8001	CLUTCH LEVER WASHER
2	E03-3201	BRAKE CLICK SPRING	49	B41-1702	WORM SHAFT HOLDER WASHER	95	353-8207	CLUTCH LEVER SCREW
3	E48-9621	BRAKE ADJ KNOB	50	G81-1801	MOTOR GEAR D	96	F59-8201	CLUTCH CAM SPRING
5	G22-5102	BRAKE ADJ KNOB WASHER	51	G15-6801	BALL BEARING C	97	G37-4502	MOTOR COVER
6	F59-2801	BRAKE DIAL WASHER	52	F59-4104	SPOOL PLT	98	G37-4802	FINGER GUARD
7	F59-1901	SET PLT	53	F20-6901	SPOOL PLT SCREW	99	353-8705	R/S PLT SCREW A
8	351-0901	SET PLT SCREW	54	F38-9102	BALL BEARING D	100	G40-5901	R/S PLT SCREW B
9	F57-3101	IDLE GEAR A COLLAR	55	G36-3001	L/S PLT SCREW A	101	F28-5901	POWER LEVER WASHER
10	F59-2101	IDLE GEAR A	56	G81-2102	LINE GUIDE	102	F30-3102	POWER LEVER NUT A
11	F57-1902	IDEL GEAR A SCREW WASHER	57	122-0601	LINE GUIDE PAWL	103	F42-9701	POWER LEVER
12	351-7705	IDLE GEAR A SCREW	58	F77-4600	LINE GUIDE PAWL WASHER	106	342-4004	POWER LEVER NUT B
13	G14-0001	IDLE GEAR C	59	E35-4101	PAWL CAP	107	F43-0002	POWER LEVER COVER
14	F59-2501	IDLE GEAR B COLLAR	60	G83-5401	WORM SHAFT	108	E25-3501	DRAG SPRING WASHER
15	F59-2602	IDLE GEAR B	64	G36-2801	WORM SHIELD	109	F47-0002	DRAG HOLDER
16	320-5901	IDLE GEAR RET	65	F46-7201	WORM SHAFT BUSH	110	B74-7702	DRAG HOLDER LEAF SPRING
17	G22-5201	MOTOR GEAR A	66	B41-1706	WORM SHAFT WASHER	111	F47-0101	FRICTION WASHER
18	G07-0301	BALL BEARING A	67	320-5901	WORM SHAFT RET	112	F55-0415	STAR DRAG
19	G07-0201	MOTOR GEAR A RET	68	G36-2901	LEVEL WIND POST	113	F47-0303	HANDLE COLLAR
20	353-8207	MOTOR GEAR A SCREW	69	B86-4101	LEVEL WIND POST RET	114	G91-9201	HANDLE
21	637-5601	MOTOR GEAR C BUSHING	70	E25-2501	DRIVE SHAFT BUSH	115	B86-2102	HANDLE NUT
22	637-2102	BALL BEARING B	71	F71-5302	DRIVE SHAFT	116	F47-1205	HANDLE NUT PLT
23	G81-1901	MOTOR	72	375-5801	DRIVE SHAFT WASHER A	117	G86-8701	ELECTRIC POWER CORD
24	G38-5901	MOTOR SCREW	73	320-7601	DRIVE SHAFT RET	118	Z01-0626	INPUT ROLLER
25	E29-2901	MOTOR GEAR B BUSHING	74	F59-7301	A/R RATCHET	120	G36-3101	L/S PLT SCREW B
26	G14-1302	MOTOR GEAR B	75	374-6604	DRIVE SHAFT WASHER B	121	371-6906	SPOOL SHAFT WASHER
27	F71-4801	MOTOR GEAR O RING	76	G81-2001	DRIVE GEAR	122	F70-1201	MOTOR WASHER
28	F73-9601	MOTOR CASE PLT	77	B36-0209	DRAG WASHER	123	G17-3401	CORD SHIELD
29	F59-5801	MOTOR CASE O RING	78	372-3833	KEY WASHER	124	F65-7801	O RING
30	F59-5901	MOTOR CASE RING	79	B36-0302	EARED WASHER	125	F65-7801	O RING
31	F73-9701	MOTOR CASE BUSHING	80	G82-9001	DRAG COLLAR A	126	F81-7001	DRAG COLLAR SHILED
32	G22-5701	MOTOR GEAR C	81	F71-5601	DRAG COLLAR B	127	F68-2600	SPOOL PLT WASHER
33	320-1611	YOKE SPRING RET	82	F59-7001	YOKE PLT	128	F66-1002	CONNECTOR CAP
34	F59-5301	MOTOR HOLDER O RING	83	E29-0601	YOKE	130	G48-8801	MOTOR O RING
35	G36-2601	MOTOR HOLDER	84	G47-3401	YOKE SPRING	131	F07-8301	MOTOR HOLDER BUSHING RING
36	351-6101	MOTOR HOLDER SCREW	85	F74-0201	PINION GEAR	132	B27-0501	BALL BEARING RET
40	G38-2502	FRAME	86	F77-3001	SPRING HOLDER	133	F18-7601	ROD CLAMP BOLT
41	G81-1501	SPOOL	88	F60-8301	A/R PAWL SPRING	134	B93-7802	ROD CLAMP BOLT RET
42	F71-3701	SPOOL BUSHING	89	F59-7201	A/R PAWL	135	F18-7801	CLAMP NUT
43	G81-1701	SPOOL SHAFT	90	G81-2601	R/S PLT	136	041-9901	ROD CLAMP
44	G12-6402	SPOOL GEAR	91	E28-6001	LINE HOLDER	137	342-5301	ROD CLAMP LOCKING NUT
45	320-5901	SPOOL SHAFT GEAR RET	92	F46-9006	CLUTCH LEVER	138	F77-4600	SPOOL GEAR WASHER
46	F71-3701	SPOOL BUSHING	93	F59-7901	CLUTCH CAM	139	320-5901	BRAKE ADJ KNOB RET
47	G22-5701	SPOOL SHAFT GEAR						