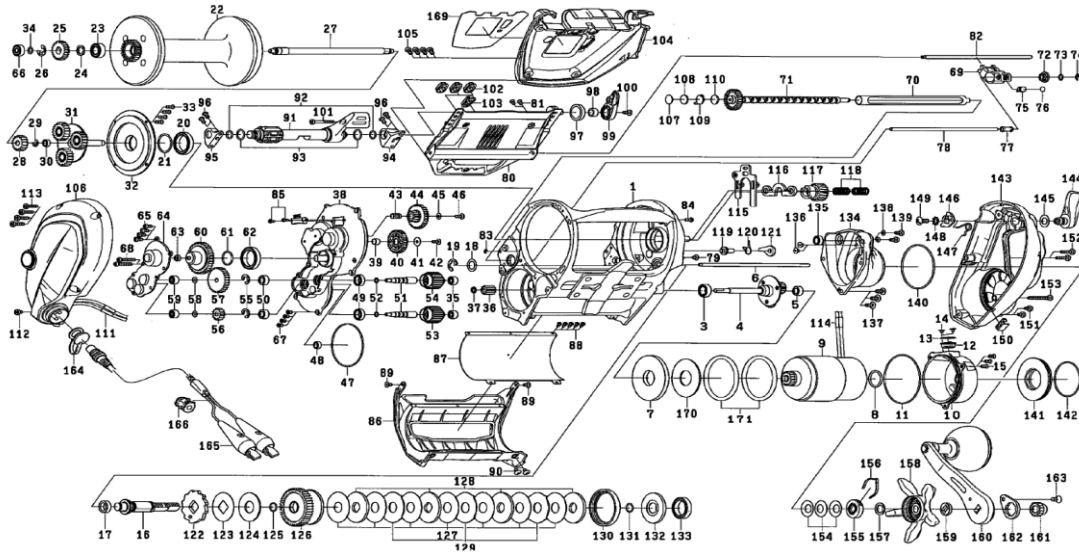


AMA

ELECTRONIC REEL

SB1200MJ

Please order by parts number, not key number
 Veuillez indiquer le numéro de la pièce (Non "Key" No.)



Key No.	Part No.	Part Name	Key No.	Part No.	Part Name
1	J42-4001	FRAME	87	J42-5501	MOTOR GUARD PLATE
2	-		88	H58-5401	MOTOR GUARD PLATE SCREW
3	G15-6801	MOTOR GEAR BALL BEARING A	89	H45-5408	FRONT COVER SCREW (A)
4	J42-4301	MOTOR MOTOR TRANSMISSION GEAR	90	F50-5705	FRONT COVER SCREW (B)
5	B35-8605	MOTOR GEAR BALL BEARING B	91	J29-1901	JOG POWER LEVER (A)
6	J26-7502	LINE GUARD POST	92	H71-4501	JOG POWER LEVER O-RING
7	J26-7401	MOTOR PLATE	93	F95-6701	JOG POWER LEVER WASHER
8	G37-8001	MOTOR O RING (A)	94	J29-1801	JOG POWER LEVER HOLDER (R)
9	J26-7601	MOTOR ASSY	95	J29-1901	JOG POWER LEVER HOLDER (L)
10	J26-7901	MOTOR HOLDER	96	B55-7607	JOG POWER LEVER HOLDER SCREW
11	F59-5801	MOTOR HOLDER O RING	97	J26-6901	JOG POWER LEVER RING
12	J26-8001	MOTOR HOLDER PACKING WASHER	98	F59-0101	JOG POWER LEVER COLLAR
13	373-7810	MOTOR HOLDER PACKING WASHER	99	J27-2101	JOG POWER LEVER (B)
14	H53-1504	MOTOR HOLDER PACKING SCREW	100	H75-3310	JOG POWER LEVER (B) SCREW
15	E13-4509	MOTOR HOLDER SCREW	101	J32-6101	JOG POWER LEVER SCREW
16	J26-8101	DRIVE SHAFT	102	J27-2201	PUSH BUTTON
17	G96-1301	DRIVE SHAFT COLLAR	103	J27-2301	SHIFT SWITCH BUTTON
18	373-7808	DRIVE SHAFT WASHER	104	J42-5901	IC MODULE COVER
19	801-3101	DRIVE SHAFT RETAINER	105	G94-5801	IC MODULE COVER SCREW
20	E29-2701	SPOOL SHAFT BALL BEARING	106	J42-6101	L/S PLATE
21	F68-2601	SPOOL SHAFT WASHER	107	F67-3802	MECHANICAL BRAKE KNOB WASHER (A)
22	J42-4601	SPOOL ASSY	108	B17-5501	MECHANICAL BRAKE KNOB WASHER (B)
23	J03-0301	SPOOL SHAFT BALL BEARING (A)	109	J05-6901	MECHANICAL BRAKE KNOB WASHER (C)
24	E15-4801	SPOOL SHAFT GEAR WASHER	110	G22-5103	MECHANICAL BRAKE KNOB WASHER (D)
25	G67-5001	SPOOL SHAFT GEAR (B)	111	G07-9502	SHRINK TUBING WRAP
26	320-1611	SPOOL SHAFT GEAR RETAINER	112	H75-3310	L/S PLATE SCREW (A)
27	J42-4801	SPOOL SHAFT	113	H75-3311	L/S PLATE SCREW (B)
28	J26-8801	SPOOL SHAFT GEAR (A)	114	G07-9502	SHRINK TUBING WRAP
29	G67-4101	SPOOL SHAFT GEAR (A) RETAINER	115	Y06-1601	YOKO PLATE
30	G46-9005	SPOOL GEAR BALL BEARING	116	J27-3701	PINION YOKE
31	J26-8901	MOTOR GEAR	117	J27-3801	PINION GEAR
32	J26-9501	SPOOL COVER PLATE	118	G47-3401	PINION YOKE SPRING
33	E13-4505	SPOOL PLATE SCREW	119	F77-3001	A/R PIN
34	E29-2701	SPOOL SHAFT WASHER	120	G67-7701	A/R SPRING
35	E08-8005	MOTOR GEAR BALL BEARING	121	J56-6301	A/R CLAW
36	J26-9601	MOTOR GEAR (B)	122	J27-3901	RATCHET
37	B41-1711	MOTOR GEAR (B) WASHER	123	J27-4101	RATCHET WASHER
38	J26-9701	SET PLATE (A)	124	J27-4201	DRIVE GEAR WASHER
39	F31-3101	IDLE GEAR (A) COLLAR	125	H15-6901	DRIVE SHAFT O-RING
40	F59-2101	IDLE GEAR (A)	126	J27-4301	DRIVE GEAR
41	F44-0201	IDLE GEAR (A) WASHER	127	H47-0801	DRAG WASHER
42	G94-0404	IDLE GEAR (A) SCREW	128	H47-0902	DRAG DISC WASHER
43	G07-6501	IDLE GEAR (B) COLLAR	129	H47-1002	DRAG KEY WASHER
44	G67-3301	IDLE GEAR (B)	130	J27-4401	DRAG PACKING
45	B55-4302	IDLE GEAR (B) WASHER	131	H15-6901	DRAG O-RING
46	G94-0404	IDLE GEAR (B) SCREW	132	J27-4501	DRAG COLLAR
47	G15-8601	SET PLATE O RING	133	G07-4101	BALL BEARING
48	G46-9005	SET PLATE BALL BEARING	134	J27-4601	R/S COVER A
49	G52-2702	MOTOR GEAR SHAFT BALL BEARING	135	G31-4902	R/S COVER BALL BEARING
50	B35-8605	SET PLATE GEAR BALL BEARING	136	G94-0405	R/S COVER BALL BEARING SCREW
51	J27-0001	MOTOR GEAR SHAFT	137	351-6108	R/S COVER SCREW (A)
52	H07-8001	MOTOR GEAR SHAFT O RING	138	G28-1401	R/S COVER SCREW (B) WASHER
53	G67-4101	MOTOR GEAR (HIGH)	139	H75-3310	R/S COVER SCREW (B)
54	G67-4401	MOTOR GEAR (LOW)	140	J32-6601	R/S COVER O-RING
55	320-8002	MOTOR GEAR SHAFT RETAINER	141	J27-4801	MOTOR HOLDER PLATE
56	G67-4001	IDLE GEAR (C)	142	F46-5901	MOTOR HOLDER PLATE O-RING
57	G67-3901	IDLE GEAR (D)	143	J27-4902	R/S COVER B
58	F18-9103	IDLE GEAR WASHER	144	J27-5001	CLUTCH LEVER
59	E08-8005	IDLE GEAR BALL BEARING	145	J26-8201	CLUTCH LEVER WASHER
60	J27-0101	IDLE GEAR (E)	146	F59-7901	CLUTCH CAM
61	G67-2401	IDLE GEAR (E) O RING	147	J27-5301	CLUTCH CAM SPRING
62	E29-2701	IDLE GEAR (E) BALL BEARING	148	160-8001	CLUTCH CAM WASHER
63	G07-7201	IDLE GEAR (E) COLLAR	149	F33-8212	CLUTCH CAM SCREW
64	J27-0301	SET PLATE (B)	150	E28-6001	LINE HOLDER
65	B55-7607	SET PLATE (B) SCREW	151	H75-3310	R/S PLATE SCREW (A)
66	637-2102	SPOOL SHAFT BALL BEARING (B)	152	H75-3311	R/S PLATE SCREW (B)
67	E13-4508	SET PLATE SCREW (A)	153	H75-3312	R/S PLATE SCREW (C)
68	G78-5801	SET PLATE SCREW (B)	154	F67-3601	DRAG SPRING WASHER
69	J27-0401	LEVELWIND ASSY	155	H69-1901	CLICK LEAF SPRING HOLDER
70	J42-4901	WORM SHAFT GUARD	156	H93-3201	CLICK LEAF SPRING
71	J42-5001	WORM SHAFT ASSY	157	H92-9501	SPACING SLEEVE
72	F46-7201	WORM SHAFT COLLAR	158	J27-5601	STAR DRAG
73	B41-1706	WORM SHAFT WASHER	159	F86-3202	HANDLE COLLAR
74	320-5901	WORM SHAFT RETAINER	160	J27-5801	HANDLE ASSY
75	J27-1201	OSC PAWL	161	G63-4603	HANDLE NUT
76	G09-9801	OSC PAWL WASHER	162	B88-4703	HANDLE NUT PLATE
77	J31-1301	LEVELWIND POST COLLAR	163	J31-6701	HANDLE NUT PLATE SCREW
78	J27-1402	LEVELWIND POST	164	J18-4201	CONNECTOR CAP
79	G94-0405	LEVELWIND POST SCREW	165	J32-3801	POWER CORD
80	J42-5201	IC MODULE	166	G90-5401	POWER CORD FERRITE
81	E13-4508	IC MODULE SCREW	167	-	
82	J27-1602	IC MODULE POST	168	-	
83	B86-4101	IC MODULE POST RETAINER	169	J42-6003	IC MODULE COVER PLATE
84	B55-7606	SENSOR SCREW (A)	170	J58-1201	MOTOR WASHER
85	H15-8201	SENSOR SCREW (B)	171	J58-1601	MOTOR O RING (B)
86	J42-5401	FRONT COVER			