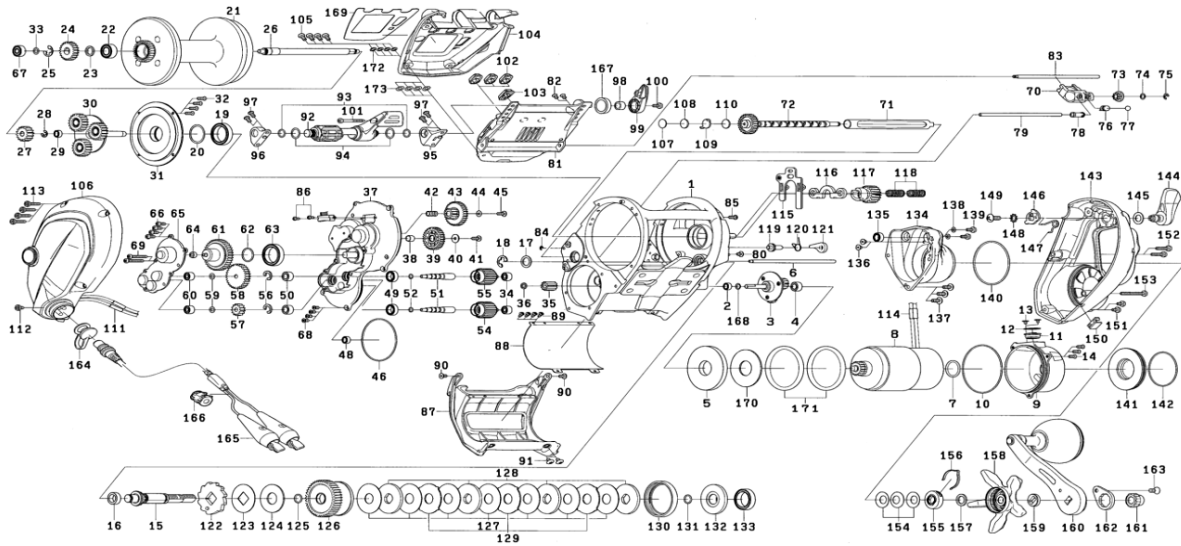


# DAEWOO

## ELECTRONIC REEL

# SB800MJ

Please order by parts number, not key number  
Veuillez indiquer le numéro de la pièce (Non "Key" No.)



| Key No. | Part No. | Part Name                       | Key No. | Part No. | Part Name                        |
|---------|----------|---------------------------------|---------|----------|----------------------------------|
| 1       | J26-6601 | FRAME                           | 92      | J27-1701 | JOG POWER LEVER (A)              |
| 2       | G46-9005 | MOTOR GEAR (B) BALL BEARING     | 93      | H71-4501 | JOG POWER LEVER O RING           |
| 3       | J26-7001 | MOTOR MOTOR TRANSMISSION GEAR A | 94      | F95-6701 | JOG POWER LEVER WASHER           |
| 4       | B35-8605 | MOTOR GEAR (A) BALL BEARING     | 95      | J29-1801 | JOG POWER LEVER HOLDER (B)       |
| 5       | J26-7401 | MOTOR PLATE                     | 96      | J29-1901 | JOG POWER LEVER HOLDER (L)       |
| 6       | J26-7501 | LINE GUARD POST                 | 97      | B55-7607 | JOG POWER LEVER HOLDER SCREW     |
| 7       | G37-8001 | MOTOR O RING (A)                | 98      | F59-0101 | JOG POWER LEVER COLLAR           |
| 8       | J26-7601 | MOTOR ASSY                      | 99      | J27-2101 | JOG POWER LEVER (B)              |
| 9       | J26-7901 | MOTOR HOLDER                    | 100     | H75-3310 | JOG POWER LEVER (B) SCREW        |
| 10      | F59-5801 | MOTOR HOLDER O RING             | 101     | J32-6101 | JOG POWER LEVER SCREW            |
| 11      | J26-8001 | MOTOR HOLDER PACKING            | 102     | J27-2201 | PUSH BUTTON                      |
| 12      | 373-7810 | MOTOR HOLDER PACKING WASHER     | 103     | J27-2301 | SHIFT SWITCH BUTTON              |
| 13      | H53-1504 | MOTOR HOLDER PACKING SCREW      | 104     | J27-2502 | IC MODULE COVER                  |
| 14      | E13-4509 | MOTOR HOLDER SCREW              | 105     | G94-5813 | IC MODULE COVER SCREW            |
| 15      | J26-8101 | DRIVE SHAFT                     | 106     | J40-3001 | L/S COVER                        |
| 16      | G96-1301 | DRIVE SHAFT COLLAR              | 107     | F67-3802 | MECHANICAL BRAKE KNOB WASHER (A) |
| 17      | 373-7808 | DRIVE SHAFT WASHER              | 108     | B17-5501 | MECHANICAL BRAKE KNOB WASHER (B) |
| 18      | B01-3101 | DRIVE SHAFT RETAINER            | 109     | J05-6901 | MECHANICAL BRAKE KNOB WASHER (C) |
| 19      | E29-2701 | SPOOL PLATE BALL BEARING        | 110     | G22-5103 | MECHANICAL BRAKE KNOB WASHER (D) |
| 20      | F68-2601 | SPOOL PLATE WASHER              | 111     | G07-9502 | SHRINK TUBING WRAP               |
| 21      | J26-8301 | SPOOL ASSY                      | 112     | H75-3311 | L/S PLATE SCREW (A)              |
| 22      | J03-0301 | SPOOL SHAFT BALL BEARING (A)    | 113     | H75-3311 | L/S PLATE SCREW (B)              |
| 23      | E15-4801 | SPOOL SHAFT GEAR WASHER         | 114     | G07-9502 | SHRINK TUBING WRAP               |
| 24      | G67-5001 | SPOOL SHAFT GEAR (B)            | 115     | J27-3501 | YOKE PLATE                       |
| 25      | 320-1611 | SPOOL SHAFT GEAR RETAINER       | 116     | J27-3701 | PINION YOKE                      |
| 26      | J26-8701 | SPOOL SHAFT                     | 117     | J27-3801 | PINION GEAR                      |
| 27      | J26-8801 | SPOOL SHAFT GEAR (A)            | 118     | G47-3401 | PINION YOKE SPRING               |
| 28      | 320-1402 | SPOOL SHAFT GEAR (A) RETAINER   | 119     | F77-3001 | A/R PIN                          |
| 29      | G46-9005 | SPOOL GEAR BALL BEARING         | 120     | G67-7701 | A/R SPRING                       |
| 30      | J26-8901 | SPOOL TRANSMISSION GEAR         | 121     | J56-6301 | A/R CLAW                         |
| 31      | J26-9501 | SPOOL COVER PLATE               | 122     | J27-3901 | RATCHET                          |
| 32      | E13-4505 | SPOOL COVER PLATE SCREW         | 123     | J27-4101 | RATCHET WASHER                   |
| 33      | F35-2701 | SPOOL SHAFT WASHER              | 124     | J27-4201 | DRIVE GEAR WASHER                |
| 34      | E08-8005 | MOTOR GEAR BALL BEARING         | 125     | H15-6901 | DRIVE SHAFT O RING               |
| 35      | J26-9601 | MOTOR GEAR (B)                  | 126     | J27-4301 | DRIVE GEAR                       |
| 36      | B41-1711 | MOTOR GEAR (B) WASHER           | 127     | H47-0801 | DRAG WASHER                      |
| 37      | J26-9701 | SET PLATE (A)                   | 128     | H47-0902 | DRAG DISC WASHER                 |
| 38      | F57-3101 | IDLE GEAR (A) COLLAR            | 129     | H47-1002 | DRAG KEY WASHER                  |
| 39      | F59-2101 | IDLE GEAR (A)                   | 130     | J27-4401 | DRAG PACKING                     |
| 40      | F44-0201 | IDLE GEAR (A) WASHER            | 131     | H15-6901 | DRAG O RING                      |
| 41      | G94-0404 | IDLE GEAR (A) SCREW             | 132     | J27-4501 | DRAG COLLAR                      |
| 42      | G07-6501 | IDLE GEAR (B) COLLAR            | 133     | G07-4101 | BALL BEARING                     |
| 43      | G67-3301 | IDLE GEAR (B)                   | 134     | J27-4602 | R/S COVER A                      |
| 44      | B55-4302 | IDLE GEAR (B) WASHER            | 135     | G31-4902 | R/S COVER A BALL BEARING         |
| 45      | G94-0404 | IDLE GEAR (B) SCREW             | 136     | G94-0405 | R/S COVER A BALL BEARING SCREW   |
| 46      | G15-8601 | SET PLATE O RING                | 137     | 351-6108 | R/S COVER A SCREW (A)            |
| 47      | -        | -                               | 138     | G28-1401 | R/S COVER A SCREW (B) WASHER     |
| 48      | G46-9005 | SET PLATE BALL BEARING          | 139     | H75-3310 | R/S COVER A SCREW (B)            |
| 49      | G52-2702 | MOTOR GEAR SHAFT BALL BEARING   | 140     | J32-6601 | R/S COVER A O RING               |
| 50      | B35-8605 | SET PLATE GEAR BALL BEARING     | 141     | J27-4801 | MOTOR HOLDER PLATE               |
| 51      | J27-0001 | MOTOR GEAR SHAFT                | 142     | F46-5901 | MOTOR HOLDER PLATE O RING        |
| 52      | H07-8001 | MOTOR GEAR SHAFT O RING         | 143     | J27-4901 | R/S COVER B                      |
| 53      | -        | -                               | 144     | J27-5001 | CLUTCH LEVER                     |
| 54      | G67-4101 | MOTOR GEAR (HIGH)               | 145     | J26-8201 | CLUTCH LEVER WASHER              |
| 55      | G67-4401 | MOTOR GEAR (LOW)                | 146     | F59-7901 | CLUTCH CAM                       |
| 56      | 320-8002 | MOTOR GEAR SHAFT RETAINER       | 147     | J27-5301 | CLUTCH CAM SPRING                |
| 57      | G67-4001 | IDLE GEAR (C)                   | 148     | 160-8001 | CLUTCH CAM WASHER                |
| 58      | G67-3901 | IDLE GEAR (D)                   | 149     | 353-8212 | CLUTCH CA SCREW                  |
| 59      | F88-9103 | IDLE GEAR WASHER                | 150     | E28-6001 | LINE HOLDER                      |
| 60      | E08-8005 | IDLE GEAR BALL BEARING          | 151     | H75-3310 | R/S COVER B SCREW (A)            |
| 61      | J27-0101 | IDLE GEAR (E)                   | 152     | H75-3311 | R/S COVER B SCREW (B)            |
| 62      | G67-2401 | IDLE GEAR (E) O RING            | 153     | H75-3312 | R/S COVER B SCREW (C)            |
| 63      | E29-2701 | IDLE GEAR (E) BALL BEARING      | 154     | F67-3601 | DRAG SPRING WASHER               |
| 64      | G07-7201 | IDLE GEAR (E) COLLAR            | 155     | H69-1901 | CLICK LEAF SPRING HOLDER         |
| 65      | J27-0301 | SET PLATE (B)                   | 156     | H93-3201 | CLICK LEAF SPRING                |
| 66      | B55-7607 | SET PLATE (B) SCREW             | 157     | H92-9501 | SPACING SLEEVE                   |
| 67      | G37-2102 | SPOOL SHAFT BALL BEARING (B)    | 158     | J27-5601 | STAR DRAG                        |
| 68      | E13-4508 | SET PLATE SCREW (A)             | 159     | F86-3202 | HANDLE COLLAR                    |
| 69      | G78-5801 | SET PLATE SCREW (B)             | 160     | J27-5801 | HANDLE                           |
| 70      | J27-0401 | LEVEL WIND ASSY                 | 161     | G63-4603 | HANDLE NUT                       |
| 71      | J27-0701 | WORM SHAFT GUARD                | 162     | B88-4703 | HANDLE NUT PLATE                 |
| 72      | J27-0801 | WORM SHAFT ASSY                 | 163     | J31-6701 | HANDLE NUT PLATE SCREW           |
| 73      | F46-7201 | WORM SHAFT COLLAR               | 164     | J18-4201 | CONNECTOR CAP                    |
| 74      | B41-1706 | WORM SHAFT WASHER               | 165     | J32-3801 | POWER CORD                       |
| 75      | 320-5901 | WORM SHAFT RETAINER             | 166     | G90-5401 | POWER CORD FERRITE               |
| 76      | J27-1201 | OSC PAWL                        | 167     | J26-6901 | JOG POWER LEVER RING             |
| 77      | G09-9801 | OSC PAWL WASHER                 | 168     | H74-4801 | MOTOR GEAR (A) SPRING WASHER     |
| 78      | J27-1301 | LEVEL WIND POST COLLAR          | 169     | J27-2603 | IC MODULE COVER PLATE            |
| 79      | J27-1401 | LEVEL WIND POST                 | 170     | J58-1201 | MOTOR WASHER                     |
| 80      | G94-0405 | LEVEL WIND POST SCREW           | 171     | B58-1601 | MOTOR O RING (B)                 |
| 81      | J27-1502 | IC MODULE                       | 172     | B53-6103 | IC MODULE COVER SCREW WASHER A   |
| 82      | E13-4508 | IC MODULE SCREW                 | 173     | B55-4301 | IC MODULE COVER SCREW WASHER B   |
| 83      | J27-1601 | IC MODULE POST                  | 201     | J01-4402 | ROD CLAMP                        |
| 84      | B58-4101 | IC MODULE POST RETAINER         | 202     | F18-7601 | ROD CLAMP SCREW                  |
| 85      | B55-7606 | SENSOR SCREW (A)                | 203     | B93-7802 | ROD CLAMP SCREW WASHER           |
| 86      | H15-8201 | SENSOR SCREW (B)                | 204     | F18-7801 | ROD CLAMP SCREW NUT              |
| 87      | J27-5401 | FRONT COVER                     | 205     | J41-5801 | CLAMP SCREW NUT (SHORT)          |
| 88      | J27-5501 | MOTOR GUARD PLATE               | 206     | J41-5802 | CLAMP SCREW NUT (LONG)           |
| 89      | H58-5401 | MOTOR GUARD PLATE SCREW         | 207     | X09-0801 | LINE THREADER                    |
| 90      | H45-5408 | FRONT COVER SCREW (A)           | 208     | G62-6201 | ROD CLAMP TOOL                   |
| 91      | F50-5705 | FRONT COVER SCREW (B)           |         |          |                                  |