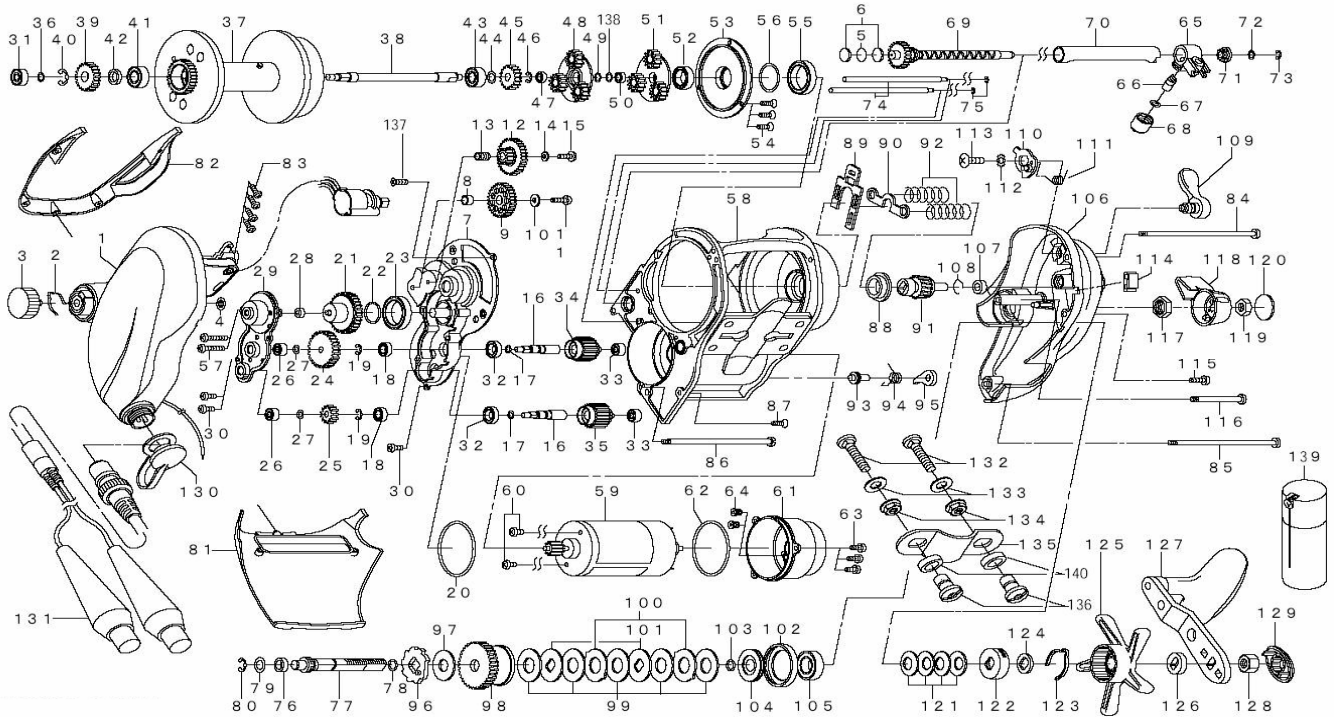


Please order by parts number, not key number
 Veuillez indiquer le numéro de la pièce.



SEABORG 750MT

ELECTRONIC REEL



Key No.	Parts No.	Parts Name	Key No.	Parts No.	Parts Name	Key No.	Parts No.	Parts Name
1	H05-7401	IC MODULE L/S PLATE SET	48	G67-5301	MOTOR GEAR(A)	95	F59-7201	ANTI-REVERSE PAWL
2	E03-3201	BRAKE CLICK SPRING	49	B41-1701	MOTOR GEAR(A) WASHER	96	G67-7801	RATCHET
3	G67-3101	BRAKE ADJ KNOB	50	G28-3802	MOTOR GEAR(B) BALL	97	374-6604	DRIVE SHAFT WASHER(B)
4	320-9702	MECHANICAL BRAKE KNOB RET	51	G67-5801	MOTOR GEAR(B)	98	G57-7901	DRIVE SHAFT
5	B17-5503	MECHANICAL BRAKE WASHER(A)	52	G15-6801	SPOOL PLATE BALL	99	B36-0209	EARED WASHER
6	F67-3802	MECHANICAL BRAKE WASHER(B)	53	G67-6001	SPOOL PLATE	100	372-3833	DRAG LIP WASHER
7	G67-9601	SET PLATE(A)	54	E13-4505	SPOOL PLATE SCREW	101	B36-0303	DRAG DISC WASHER
8	F57-3101	IDLE GEAR(A) COLLAR	55	E29-2701	SPOOL PLATE BALL	102	F81-7001	DRAG COLLAR SHIELD
9	F59-2101	IDLE GEAR(A)	56	F68-2600	SPOOL PLATE BALL	103	F65-7801	DRAG O RING
10	F57-1902	IDLE GEAR(A) WASHER	57	G78-5801	SET PLATE SCREW(B)	104	G67-8001	DRIVE SHAFT COLLAR
11	F84-8401	IDLE GEAR(A) SCREW	58	G69-1701	FRAME	105	G43-9402	HANDLE BALL BEARING
12	G67-3301	IDLE GEAR(B)	59	G67-6201	MOTOR	106	G69-2001	R/S PLATE
13	G07-6501	IDLE GEAR(B) COLLAR	60	F91-4401	MOTOR SCREW	107	E35-1501	PINION GEAR BUSHING(B)
14	B55-4301	DLE GEAR(B) WASHER	61	G67-6501	MOTOR HOLDER	108	E21-9701	PINION GEAR RING
15	351-1805	IDLE GEAR(B) SCREW	62	G15-8601	MOTOR HOLDER O RING	109	F46-9016	CLUTCH LEVER
16	G67-3401	MOTOR WASHER	63	351-0905	MOTOR HOLDER SCREW	110	F59-7901	CLUTCH CAM
17	G67-3501	MOTOR GEAR SHAFT O RING	64	G17-3401	CORD COVER	111	F59-8201	CLUTCH CAM SPRING
18	B35-6605	IDLE GEAR BALL BEARING	65	F59-6004	LEVELWIND	112	160-8001	CLUTCH CAM WASHER
19	320-1402	MOTOR GEAR SHAFT RET	66	122-0601	LEVELWIND PAWL	113	353-8207	CLUTCH CAM SCREW
20	G15-8601	MOTOR O RING	67	F95-0200	LEVELWIND WASHER	114	E28-6004	LINE HOLDER
21	G67-3601	IDLE GEAR (C)	68	E35-4101	LEVELWIND NUT	115	351-6401	RS PLATE SCREW(C)
22	G67-2401	DLE GEAR(C) O RING	69	G67-6601	WORM SHAFT	116	G69-2201	RS PLATE SCREW(D)
23	E29-2701	IDLE GEAR(C) BALL BEARING(A)	70	G67-7101	WORM SHIELD	117	G13-9601	POWER LEVER NUT(A)
24	G67-3901	IDLE GEAR(D)	71	F46-7201	WORM SHAFT BUSHING	118	F86-2301	POWER LEVER
25	G67-4001	IDLE GEAR(E)	72	B41-1706	WORM SHAFT WASHER	119	342-4004	POWER LEVER NUT(B)
26	E08-8005	IDLE GEAR(D) BALL BEARING	73	320-5901	WORM SHAFT RET	120	F86-2801	POWER LEVER COVER
27	F77-4603	IDLE GEAR WASHER	74	G67-7201	LEVELWIND POST	121	F67-3601	DRAG SPRING WASHER
28	G07-7201	IDLE GEAR(C) BALL BEARING(B)	75	B86-4101	LEVELWIND POST RET	122	F47-0002	DRAG HOLDER
29	G67-9101	SET PLATE(B)	76	G08-1901	DRIVE SHAFT BUSHING	123	B74-7702	DRAG HOLDER LEAF SPRING
30	351-0905	SPOOL PLATE SCREW (A)	77	G67-7301	DRIVE SHAFT	124	F47-0101	HANDLE WASHER
31	637-2102	SPOOL SHAFT BALL BEARING	78	F65-7801	DRIVE SHAFT O RING	125	F55-0424	STAR DRAG
32	F01-6401	MOTOR GEAR SHAFT BALL BEARING	79	375-5801	DRIVE SHAFT WASHER	126	F47-0303	HANDLE COLLAR
33	E06-8005	MOTOR GEAR BALL BEARING	80	320-7601	DRIVE SHAFT RET	127	G67-8101	HANDLE
34	G67-4101	MOTOR GEAR(HI)	81	G69-1302	FINGER GUARD	128	B66-2102	HANDLE NUT
35	G67-4401	MOTOR GEAR(LOW)	82	G69-1801	IC MODULE COVER	129	F47-1207	HANDLE CAP
36	B41-1700	SPOOL SHAFT GEAR WASHER	83	E00-4301	IC MODULE COVER SCREW	130	F66-1001	CONNECTOR CAP
37	G67-4501	SPOOL	84	G69-1901	R/S PLATE SCREW(A)	131	F59-8405	ELECTRIC POWER CORD
38	G67-4901	SPOOL SHAFT	85	F58-6301	R/S PLATE SCREW(B)	132	F18-7601	CLAMP SCREW
39	G67-5001	SPOOLSHAFTGEAR	86	G67-7401	FRAME SCREW(A)	133	B93-7802	CLAMP SCREW WASHER
40	320-1611	SPOOL GEAR RET	87	E13-4501	FRAME SCREW(B)	134	F18-7801	CLAMP SCREW NUT
41	G29-2802	SPOOL PLATE BALL BEARING(A)	88	G67-7501	PINION GEAR BUSHING (A)	135	041-9901	CLAMP PLATE
42	G67-5101	SPOOL SHAFT GEAR COLLAR	89	F59-7001	YOKE PLATE	136	342-5301	CLAMP PLATE NUT
43	G53-6001	SPOOL PLATE BALL BEARING(B)	90	E29-0601	YOKE	137	E13-4508	SET PLATE SCREW(C)
44	375-3002	SPOOL GEAR WASHER	91	G67-7601	PINION GEAR	138	B41-1701	MOTOR GEAR(A) WASHER
45	G67-5201	SPOOL GEAR	92	G47-3401	CLUTCH PLATE SPRING	139	X14-8901	REEL GUARD OIL
46	320-1402	SPOOL GEAR RET	93	F77-3001	ANTI-REVERSE PAWL	140	G98-1701	COLLAR
47	G28-3802	MOTOR GEAR(A) BALL BEARING	94	G67-7701	ANTI-REVERSE PAWL			