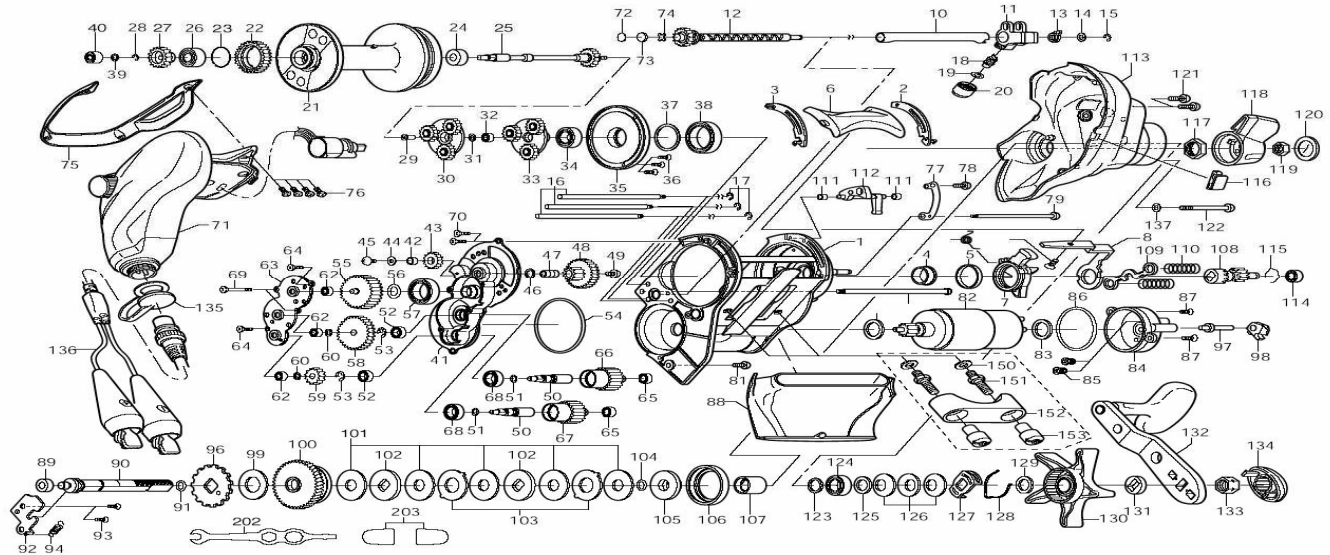


Please order by parts number, not key number
Veuillez indiquer le numéro de la pièce.



SEABORG 500MT

ELECTRONIC REEL



Key No.	Parts No.	Parts Name.	Key No.	Parts No.	Parts Name.	Key No.	Parts No.	Parts Name.
1	G73-3001	FRAME	50	G73-0701	MOTOR GEAR SHAFT	99	F82-6702	DRIVE SHAFT WASHER
2	G73-3501	SPACER(R)	51	G67-3501	MOTOR GEAR SHAFT O RING	100	G73-4901	DRIVE GEAR
3	G73-3601	SPACER(L)	52	F05-5601	IDLE GEAR BALL BEARING	101	G73-5001	EARED WASHER
4	G73-3701	PINION GEAR BUSHING	53	320-1402	MOTOR GEAR SHAFT RET	102	B36-0307	DRAG DISC WASHER
5	G20-2701	CLUTCH CAM BUSHING	54	G89-6901	MOTOR O RING	103	372-3837	DRAG LIP WASHER
6	G73-3801	CLUTCH CAM LEVER(A)	55	G73-0801	IDLE GEAR(C)	104	F65-7801	DRAG O RING
7	G73-3901	CLUTCH CAM	56	G33-9401	IDLE GEAR(C) O RING	105	G73-5501	DRAG COLLAR(A)
8	G73-4001	CLUTCH CAM PLATE	57	G05-5101	IDLE GEAR(C) BALL BEARING (A)	106	F81-7001	DRAG COLLAR SHIELD
9	F21-1103	CLUTCH CAM PLATE SCREW	58	G73-1301	IDLE GEAR(D)	107	G29-0901	DRAG COLLAR(B)
10	G07-2101	WORM SHIELD	59	G73-1401	IDLE GEAR(E)	108	G73-5101	PINION GEAR
11	G73-4101	LEVEL WIND	60	375-4102	IDLE GEAR WASHER	109	G73-5201	CLUTCH P LATE
12	G81-5201	WORM SHAFT	61	375-4100	IDLE GEAR(E) WASHER	110	F30-4701	CLUTCH PLATE SPRING
13	F85-9101	WORM SHAFT BUSHING	62	G28-1605	IDLE GEAR(C) BALL BEARING (B)	111	G71-1001	CLUTCH CAM LEVER(B)COLLAR
14	F77-4603	WORM SHAFT WASHER	63	G73-1501	SET PLATE (B)	112	G73-5801	CLUTCH CAM LEV ER (B)
15	B86-4101	WORM SHAFT RET	64	E13-4508	SET PLATE (B) SCREW	113	G73-5301	R/S PLATE
16	G07-2701	WORM SHAFT	65	F28-3101	MOTOR GEAR BALL BEARING	114	G43-0901	PINION GEAR BALL BEARING
17	B86-4101	WORM SHAFT RET	66	G73-1001	MOTOR GEAR (HI)	115	E21-9701	PINION GEAR BALL BEARING RING
18	G07-2801	LEVELWIND PAWL	67	G73-1002	MOTOR GEAR (LOW)	116	E28-6003	LINE HOLDER
19	F77-4600	LEVELWIND WASHER	68	G52-2702	MOTOR GEAR SHAFT BALL BEARING	117	G13-9601	POWER LEVER NUT(A)
20	F68-2802	LEVELWIND NUT	69	G75-2401	SET PLATE SCREW (B)	118	F86-2301	POWER LEVER
21	G73-1601	SPOOL	70	E13-4508	SET PLATE SCREW (A)	119	342-4004	POWER LEVER NUT(B)
22	G07-4501	SPOOL GEAR	71	H04-1501	IC MODULE L/S PLATE SET	120	F86-2801	POWER LEVER COVER
23	G07-4601	SPOOL GEAR RING	72	374-9102	MECHANICAL BRAKE WASHER(A)	121	G75-2601	R/S PLATE SCREW(A)
24	G00-8001	SPOOL SHAFT BEARING	73	F85-3501	MECHANICAL BRAKE WASHER(B)	122	G75-2701	R/S PLATE SCREW(B)
25	G73-1901	SPOOL SHAFT	74	F85-3602	MECHANICAL BRAKE WASHER(C)	123	F36-6804	HANDLE BALL BEARING WASHER(A)
26	G43-1201	SPOOL BALL BEARING (A)	75	G73-5701	IC MODULE COVER	124	G52-3401	HANDLE BALL BEARING
27	G73-2201	SPOOL SHAFT GEAR	76	E00-4301	IC MODULE COVER SCREW	125	373-7813	HANDLE BALL BEARING WASHER(B)
28	F55-0501	SPOOL SHAFT GEAR RET	77	G75-2501	CLUTCH CAM HOLD PLATE	126	F67-3601	DRAG SPRING WASHER
29	G63-7801	MOTOR GEAR(A) BEARING	78	B55-7601	CLUTCH CAM HOLD PLATE SCREW	127	F86-2901	DRAG HOLDER
30	G73-2301	MOTOR GEAR(A)	79	G07-8103	FRAME SCREW (A)	128	B74-7702	DRAG HOLDER LEAF SPRING
31	375-4100	MOTOR GEAR(B) BALL BEARING WASHER	80	G07-8001	FRAME SCREW (B)	129	373-7810	STAR DRAG WASHER
32	G28-1602	MOTOR GEAR(B) BALL BEARING	81	E13-4505	FRAME SCREW (C)	130	F86-3007	STAR DRAG
33	G73-2701	MOTOR GEAR(B)	82	G73-4301	MOTOR	131	F86-3202	HANDLE COLLAR
34	G42-7201	SPOOL PLATE BALL BEARING (A)	83	G07-3001	MOTOR WASHER	132	G67-8101	HANDLE
35	G73-2901	SPOOL PLATE	84	G73-4601	MOTOR HOLDER	133	B86-2102	HANDLE NUT
36	G29-7002	SPOOL PLATE SCREW	85	G17-3401	CORD COVER	134	F47-1207	HANDLE CAP
37	F68-2600	SPOOL PLATE BEARING (B)WASHER	86	F27-3301	MOTOR HOLDER O RING	135	F66-1002	CONNECTOR CAP
38	E29-2702	SPOOL PLATE BALL BEARING (B)	87	E13-4508	MOTOR HOLDER SCREW	136	F59-8405	ELECTRIC POWER CORD
39	375-4100	SPOOL SHAFT GEAR WASHER	88	G73-4701	FINGER GUARD	137	B53-6103	R/S PLATE SCREW(B) WASHER
40	E08-8005	SPOOL SHAFT BALL BEARING	89	E35-1501	DRIVE SHAFT BUSHING	150	375-1505	CLAMP SCREW WASHER
41	G73-0401	SET PLATE(A)	90	G73-4801	DRIVE SHAFT	151	G84-8201	CLAMP SCREW
42	F54-2601	IDLE GEAR(A) COLLAR	91	F65-7801	DRIVE SHAFT O RING	152	G35-6401	CLAMP PLATE
43	G07-6701	IDLE GEAR(A)	92	G75-1001	DRIVE SHAFT PLATE	153	F18-7701	CLAMP PLATE NUT
44	B55-4301	IDLE GEAR(A) WASHER	93	F21-1102	DRIVE SHAFT PLATE SCREW	200	Y46-7001	OWNER'S MANUAL
45	353-8301	IDLE GEAR(A) SCREW	94	F96-2801	KICK LEVER SPRING	201	X14-8901	REEL GUARD OIL
46	E09-6504	IDLE GEAR(B) WASHER	95	G52-6801	CLUTCH CAM SPRING	202	G62-6201	SCREW DRIVER
47	G07-6501	IDLE GEAR(B) COLLAR	96	F82-6301	RATCHET	203	G23-8201	REEL SHEET PROTECTOR
48	G07-6601	IDLE GEAR (B)	97	G83-1701	ANTI-REVERSE PAWL HOLDER			
49	353-8301	IDLE GEAR(B) SCREW	98	F93-8801	ANTI-REVERSE PAWL			