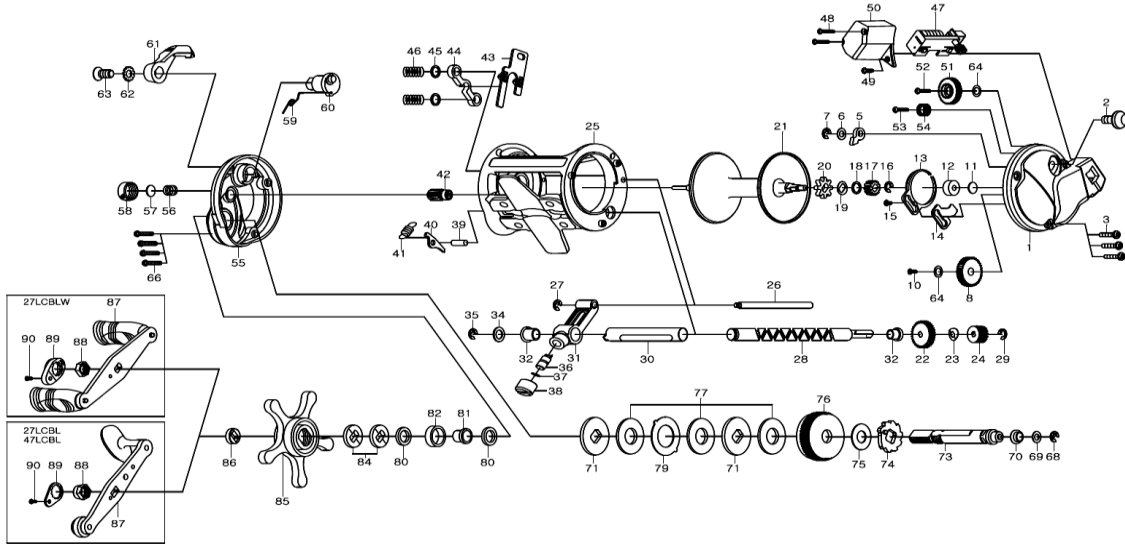


# ACCUDEPTH PLUS 27LCBL / 27LCBLW/ 47LCBL



Key No.	ADP27LCBL Part No.	PART NAME	ADP27LCBLW Part No.	ADP47LCBL Part No.
1	230-2650	RIGHT SIDE PLATE	230-2650	230-2650
2	330-2860	CLICK BUTTON	330-2860	330-2860
3	460-4850	SIDE PLATE SCREW	460-4850	460-4850
5	190-1140	CLICK PAWL	190-1140	190-1140
6	540-4170	WASHER(A)	540-4170	540-4170
7	200-0580	RETAINER	200-0580	200-0580
8	240-2860	IDLE GEAR	240-2860	240-2860
10	460-2150	SCREW	460-2150	460-2150
11	540-2830	WASHER (B)	540-2830	540-2830
12	150-1350	BALL BEARING	150-1350	150-1350
13	510-5120	CLICK SPRING	510-5120	510-5120
14	410-3040	CLICK SPRING RETAINER	410-3040	410-3040
15	460-2260	CLICK SPRING SCREW	460-2260	460-2260
16	200-0870	SPOOL GEAR RETAINER	200-0870	200-0870
17	240-2230	SPOOL GEAR	240-2230	240-2230
18	540-5580	WASHER(C)	540-5580	540-5580
19	540-5570	CLICK SPRING WASHER	540-5570	540-5570
20	240-2850	CLICK GEAR	240-2850	240-2850
21	700-8821	SPOOL ASSEMBLY	700-8821	700-9730
22	240-2310	WORM SHAFT GEAR	240-2310	240-2310
23	540-8140	WASHER	540-8140	540-8140
24	240-2910	GEAR	240-2910	240-2910
25	700-0930	FRAME ASSEMBLY	700-0930	700-0970
26	400-2670	STABILIZER BAR	400-2670	400-2680
27	200-0570	E-CLIP	200-0570	200-0570
28	470-2100	WORM SHAFT	470-2100	470-2110
29	200-0570	E-CLIP	200-0570	200-0570
30	270-0820	LEVEL WIND GUARD	270-0820	270-0840
31	490-1090	LINE GUIDE ASSEMBLY	490-1090	490-1090
32	150-1790	WORM SHAFT HOLDER	150-1790	150-1790
34	540-7160	WASHER	540-7160	540-7160
35	200-0590	RETAINER (B)	200-0590	200-0590
36	400-2580	LINE GUIDE PAWL	400-2580	400-2580
37	540-3980	LINE GUIDE WASHER	540-3980	540-3980
38	380-1740	PAWL CAP	380-1740	380-1740
39	400-3320	ANTI-REVERSE PAWL PIN	400-3320	400-3320
40	530-0900	ANTI-REVERSE PAWL	530-0900	530-0900
41	510-4210	ANTI-REVERSE PAWL SPRING	510-4210	510-4210
42	260-2050	PINION GEAR	260-2050	260-2060
43	410-3070	YOKE PLATE	410-3070	410-3070
44	410-3030	YOKE	410-3030	410-3030
45	540-5480	YOKE WASHER	540-5480	540-5480
46	510-5100	SPRING	510-5100	510-5100
47	550-1371	COUNTER ASSEMBLY	550-1371	550-1371
48	460-5240	COUNTER SCREW	460-5240	460-5240
49	460-4160	COUNTER SCREW	460-4160	460-4160
50	220-3070	COUNTER COVER	220-3070	220-3070
51	240-2820	COUNTER GEAR (B)	240-2820	240-2820
52	460-5660	COUNTER GEAR SCREW	460-5660	460-5660
53	460-5670	COUNTER GEAR SCREW	460-5670	460-5670
54	240-2830	COUNTER GEAR (C)	240-2830	240-2830
55	230-2640	LEFT SIDE PLATE	230-2640	230-2641
56	510-2440	SPOOL TENSION SPRING	510-2440	510-2440
57	540-2830	WASHER (D)	540-2830	540-2830
58	310-1350	CAST CONTROL CAP	310-1350	310-1350
59	510-5380	CLUTCH SPRING	510-5380	510-5380
60	170-1390	CLUTCH CAM	170-1390	170-1390
61	330-2750	CLUTCH LEVER	330-2750	330-2750
62	540-5440	CLUTCH LEVER LICK WASHER	540-5440	540-5440
63	460-4330	CLUTCH LEVER SCREW	460-4330	460-4330
64	540-6210	WASHER	540-6210	540-6210
66	460-6010	LEFT SIDE PLATE SCREW	460-6010	460-6010
68	200-0590	DRIVE SHAFT RETAINER	200-0590	200-0590
69	540-6990	DRIVE SHAFT WASHER(A)	540-6990	540-6990
70	150-1760	DRIVE SHAFT BUSING	150-1760	150-1760
71	540-8000	WASHER (E)	540-8000	540-8000
73	470-3200	DRIVE SHAFT	470-3200	470-3200
74	240-2560	A/R RATCHET	240-2560	240-2560
75	540-6990	DRIVE SHAFT WASHER (B)	540-6990	540-6990
76	250-1380	DRIVE GEAR	250-1380	250-1380
77	540-7000	DRAG WASHER	540-7000	540-7000
79	540-7990	EARED WASHER	540-7990	540-7990
80	540-5550	WASHER (F)	540-5550	540-5550
81	210-0750	SPACING SLEEVE (A)	210-0750	210-0750
82	150-1820	BUSING (C)	150-1820	150-1820
84	540-9010	DRAG SPRING WASHER	540-9010	540-9010
85	320-1220	STAR DRAG	320-1220	320-1220
86	210-0990	SPACING SLEEVE(B)	210-0990	210-0990
87	700-8730	HANDLE ASSEMBLY	700-8610	700-8730
88	380-2000	HANDLE NUT	380-2010	380-2000
89	350-0310	HANDLE NUT PLATE	180-1990	350-0310
90	460-5390	HANDLE NUT PLAT SCREW	460-4380	460-5390