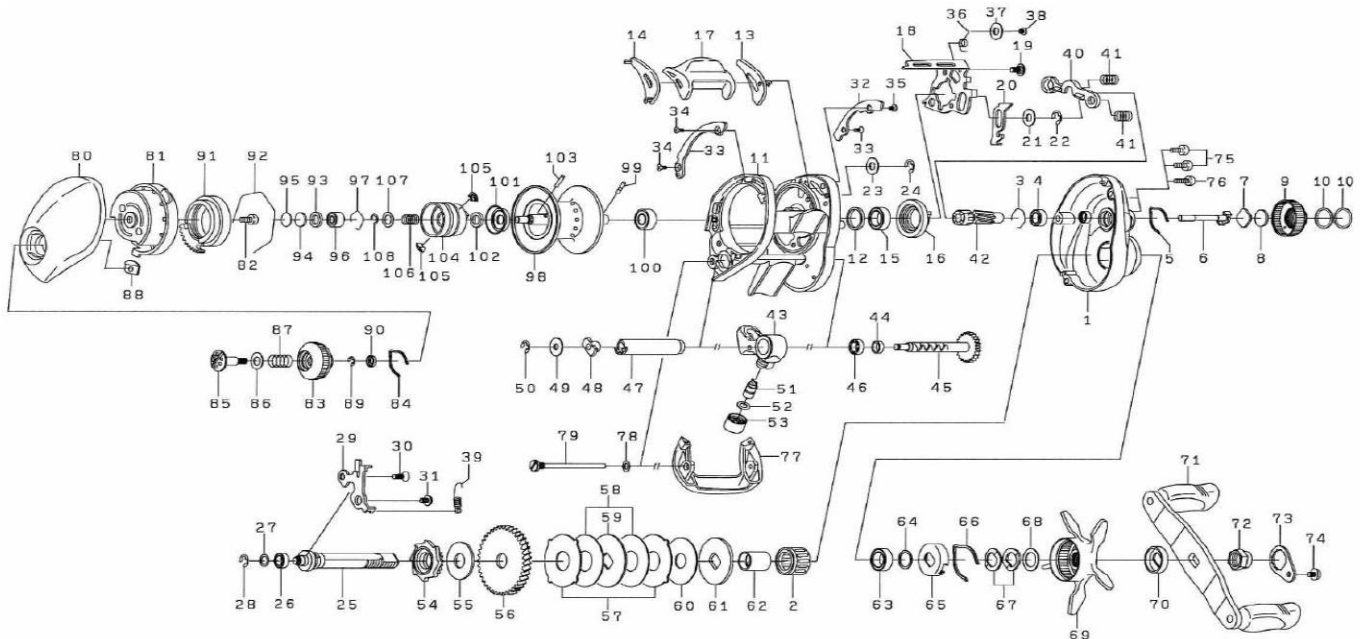




Please order by parts number, not key number  
Veuillez indiquer le numéro de la pièce.

# BAITCASTING REEL TD-ZILLION 100HSHR



Key No.	Parts No.	Parts Name	Key No.	Parts No.	Parts Name
1	G78-8413	Right side plate	50	320-5901	Worm shaft retainer
2	G81-9801	Roller clutch	51	121-4212	Line guide pawl
3	B42-1601	Bearing retainer (A)	52	373-1300	Line guide washer
4	B35-8605	Ball bearing (A)	53	342-4807	Pawl cap
5	G89-4401	Click leaf spring (A)	54	G79-0901	Clutch wheel
6	F74-4101	Pinion shaft	55	G86-3501	Drive shaft washer
7	B17-5401	Spacer (A)	56	H20-6701	Drive gear
8	B17-5503	Spacer (B)	57	G79-1301	Eared washer
9	H14-5902	Cast control cap	58	G79-1402	Drag washer (A)
10	G16-2402	"O" ring	59	F90-4902	Key washer (A)
11	H02-6404	Frame assembly	60	H11-8401	Drag washer (B)
12	F83-4701	Collar	61	G35-8501	Key washer (B)
13	G00-9302	Spacer (C)	62	G01-1401	Gear shaft collar
14	G00-9402	Spacer (D)	63	B86-1702	Ball bearing (E)
15	G43-1004	Ball bearing (B)	64	B55-3801	Bearing washer
16	F79-3501	Clutch earl	65	F02-8201	Click leaf spring holder
17	G00-9501	Clutch lever	66	F03-2401	Click leaf spring (B)
18	G79-0001	Clutch cam plate	67	150-8901	Drag spring washer
19	G00-9701	Clutch cam screw	68	G69-4201	Spacing sleeve
20	G79-0101	Clutch trip plate	69	H23-8603	Star drag
21	371-6906	Washer (A)	70	F85-0402	Handle collar
22	320-1402	Retainer (A)	71	H47-5101	Handle assembly
23	G85-0701	Washer (B)	72	G79-3301	Handle nut
24	320-5901	Retainer (B)	73	040-3209	Handle nut plate
25	G79-0201	Drive shaft	74	353-8301	Handle nut plate screw
26	F05-5601	Ball bearing (C)	75	G04-0805	Right side plate screw (A)
27	G75-5201	Washer (C)	76	G04-0801	Right side plate screw (B)
28	320-5901	Retainer (C)	77	G01-1601	Front plate
29	G79-0301	Drive shaft retainer	78	G68-4801	Washer (E)
30	E13-4503	Drive shaft retainer screw (A)	79	G01-1702	Stabilizer bar
31	G85-0401	Drive shaft retainer screw (B)	80	G01-1826	Left side plate
32	G79-4109	Plate (A)	81	G01-1902	Left set plate
33	G79-5709	Plate (B)	82	351-0906	Left set plate screw
34	G31-8503	Screw (A)	83	F57-7802	Brake adjusting knob
35	G61-1501	Screw (B)	84	F05-1701	Brake click spring
36	G79-0401	Clutch cam spring	85	G79-3501	Set plate screw
37	F44-0201	Washer (D)	86	G79-3607	Washer (F)
38	F50-5701	Screw (IC)	87	E16-7101	Set plate spring
39	G79-0501	Clutch trip plate spring	88	F61-3401	Brake dial retainer (A)
40	F79-4801	Yoke	89	B33-9801	Brake dial retainer (B)
41	G85-0301	Yoke spring	90	F63-7701	Brake dial washer
42	H20-6601	Pinion gear	91	F71-7702	Magnet holder
43	G41-0301	Line guide	92	B54-3201	Magnet holder retainer
44	G01-0701	Worm shaft holder (A)	93	F57-4303	Spacer (E)
45	G79-0701	Worm shaft assembly	94	375-7411	Spacer (F)
46	G46-6202	Ball bearing (D)	95	375-7404	Spacer (G)
47	F83-6502	Level wind guard	96	G43-1102	Ball bearing (F)
48	B71-5601	Worm shaft holder (B)	97	E21-9701	Bearing retainer (B)
49	F65-5501	Worm shaft washer	98-108	H47-6101	Spool assembly