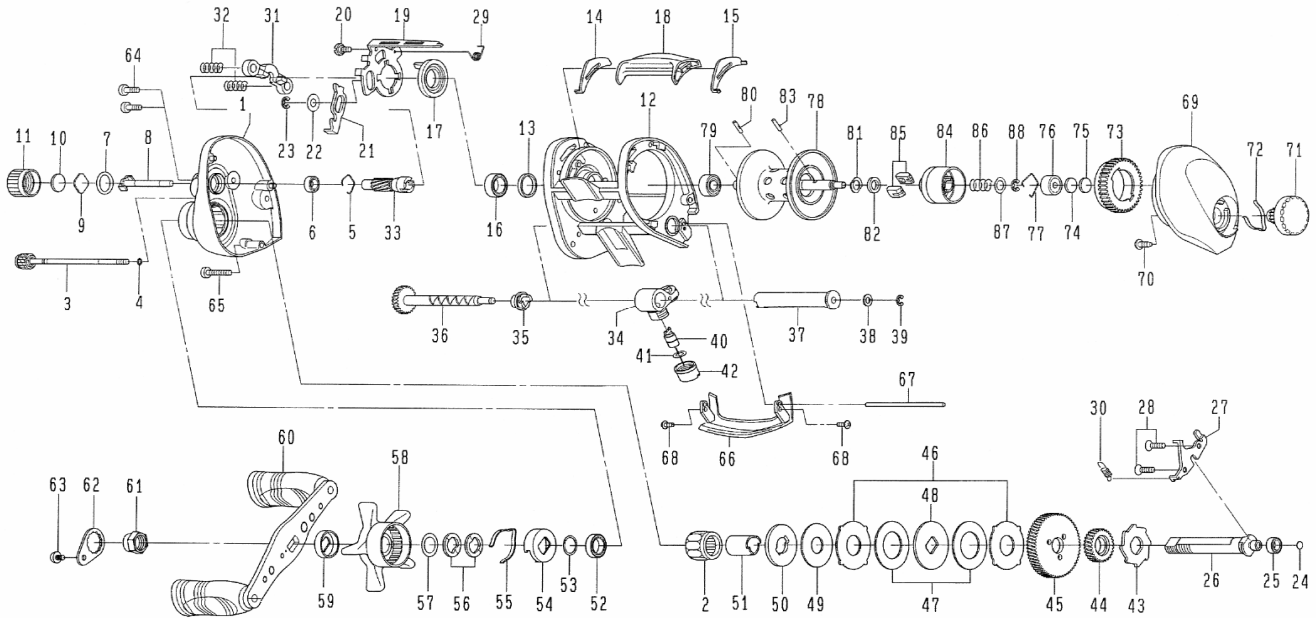


Please order by parts number, not key number  
 Veuillez indiquer le numéro de la pièce.



# TEAM DAIWA TIERRA 153HL



Key No.	Parts No.	Parts Name	Key No.	Parts No.	Parts Name
1	G60-1506	Left side plate	40	121-4212	Line guide pawl
2	G81-9801	Roller clutch	41	373-1300	Line guide washer
3	G71-8402	Left side plate screw (A)	42	F40-2801	Pawl cap
4	B85-3101	"O" ring (A)	43	F76-1701	Clutch wheel
5	E21-9701	Bearing retainer (A)	44	G00-1501	Drive gear (A)
6	G46-6202	Ball bearing (A)	45	G60-2101	Drive gear (B)
7	171-5201	"O" ring (B)	46	F79-6101	Eared washer
8	F80-0501	Pinion shaft	47	G42-8501	Drag washer (A)
9	B17-5401	Spool adjusting cap metal	48	F79-6301	Key washer (A)
10	B17-5503	Spacer (A)	49	G45-5801	Drag washer (B)
11	F57-4414	Cast control cap	50	G14-1801	Key washer (B)
12	G60-1705	Frame assembly	51	G54-5001	Gear shaft collar
13	F83-4701	Clutch cam washer	52	F58-2501	Ball bearing (D)
14	G54-3501	Spacer (B)	53	B55-3801	Bearing washer
15	G54-3401	Spacer (C)	54	F02-8201	Click leaf spring holder
16	B86-1701	Ball bearing (B)	55	F03-2401	Click leaf spring
17	F99-7401	Clutch cam (A)	56	150-8901	Drag spring washer
18	G54-3601	Clutch lever	57	373-7810	Spacing sleeve
19	G60-1801	Clutch cam (B)	58	F57-6502	Star drag
20	G00-9701	Clutch cam screw	59	F85-0401	Handle collar
21	G26-1101	Clutch trip plate	60	G87-9901	Handle assembly
22	371-6905	Washer	61	G79-3302	Handle nut(A)
23	320-1402	Retainer	62	040-3207	Handle nut plate
24	G35-7506	Drive shaft washer	63	353-8301	Handle nut screw
25	F05-5601	Ball bearing (C)	64	G04-0801	Left side plate screw (B)
26	G87-7202	Drive shaft	65	G47-3501	Left side plate screw (C)
27	G60-1901	Drive shaft retainer	66	G54-5308	Front plate
28	E13-4508	Drive shaft retainer screw	67	G54-5401	Stabilizer bar
29	G60-2201	Clutch cam spring	68	B36-0401	Front plate screw
30	G01-0201	Clutch trip plate spring	69	G60-5806	Right side plate
31	F99-8201	Yoke	70	F21-2201	Set plate screw
32	G59-7301	Yoke spring	71	F82-1215	Brake adjusting knob
33	G60-2001	Pinion gear	72	F26-2701	Brake click spring
34	G54-4301	Line guide	73	G54-5701	Magnet holder
35	G12-8201	Worm shaft holder	74	375-7411	Spacer(D)
36	G54-4601	Worm shaft assembly	75	375-7404	Spacer (E)
37	G54-4801	Level wind guard	76	637-4601	Ball bearing (F)
38	373-1306	Worm shaft washer	77	F03-2201	Bearing retainer (B)
39	320-5901	Worm shaft retainer	78-88	Z01-7366	Spool assembly