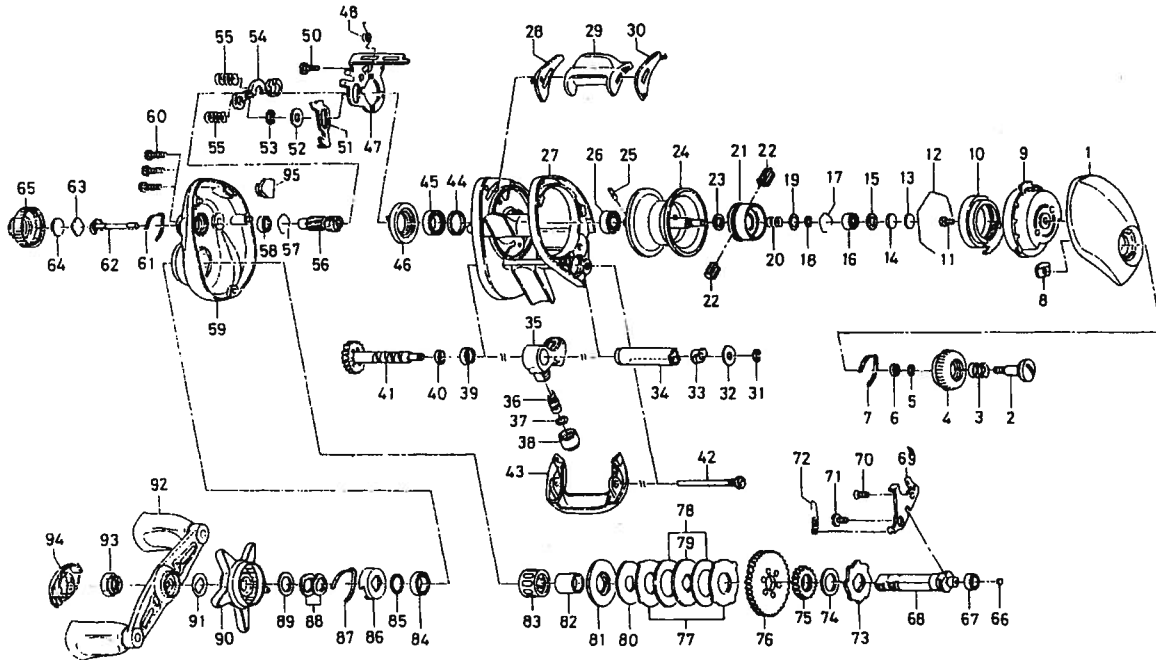


TEAM DAIWA - Z103ML



Key No.	Parts No.	Parts Name	Key No.	Parts No.	Parts Name
1	G26-1601	R/S PLT	53	320-1402	CLUTCH TRIP PLT RET
2	F57-7901	SET PLT SCREW	54	F79-4801	YOKE
3	E16-7101	SET PLT SPRING	55	G04-7201	YOKE SPRING
4	F57-7802	BRAKE ADJ KNOB	56	G26-1301	PINION GEAR
5	B33-9801	BRAKE DIAL RET A	57	E21-9701	BEARING RET B
6	F63-7701	BRAKE DIAL WASHER	58	F05-5601	BALL BEARING D
7	F05-1701	BRAKE CLICK SPRING	59	G26-0301	L/S PLT
8	F61-3401	BRAKE DIAL RET B	60	G04-0801	L/S PLT SCREW
9	G26-1801	RIGHT SET PLT	61	F26-2701	CLICK LEAF SPRING
10	F71-7702	MAGNET HOLDER	62	G01-5501	PINION SHAFT
11	351-0906	RIGHT SET PLT SCREW	63	B17-5401	SPOOL ADJ CAP METAL
12	B54-3201	MAGNET HOLDER RET RING	64	B17-5503	SPACER D
13	375-7400	SPACER A	65	F83-3901	CAST CONTROL CAP
14	375-7411	SPACER B	66	F64-7201	DRIVE SHAFT WASHER A
15	F57-4303	SPACER C	67	F05-5601	BALL BEARING E
16	F57-7703	BALL BEARING A	68	G00-9902	DRIVE SHAFT
17	E21-9701	BEARING RET A	69	G26-1201	DRIVE SHAFT RET
18-26	Z01-2007	SPOOL	70	E13-4503	DRIVE SHAFT RET SCREWA
27	G26-0501	FRAME	71	G02-1201	DRIVE SHAFT RET SCREWB
28	G26-0801	CLUTCH LEVER PLT A	72	G01-0201	CLUTCH TRIP PLT SPRING
29	G26-0901	CLUTCH LEVER	73	F83-6901	A/R RATCHET
30	G26-0701	CLUTCH LEVER PLT B	74	E48-9502	DRIVE SHAFT WASHER B
31	320-5901	WORM SHAFT RET	75	G01-1201	WORM SHAFT GEAR
32	F65-5501	WORM SHAFT WASHER	76	G26-1401	DRIVE GEAR
33	B71-5601	WORM SHAFT BUSH	77	F79-6102	EARED WASHER
34	F83-6501	WORM SHIELD	78	F79-6201	DRAG WASHER A
35	G01-0401	LINE GUIDE	79	F79-6303	KEY WASHER A
36	121-4212	LINE GUIDE PAWL	80	F96-7801	DRAG WASHER B
37	373-1303	LINE GUIDE WASHER	81	B36-0303	KEY WASHER B
38	342-4803	PAWL CAP	82	G01-1401	GEAR SHAFT COLLAR
39	F05-5601	BALL BEARING B	83	F99-9801	ROLLER CLUTCH
40	G01-0701	WORM SHAFT COLLAR	84	F58-2501	BALL BEARING F
41	G01-0801	WORM SHAFT	85	B55-3801	BEARING WASHER
42	G01-1702	STABILIZER BAR	86	F02-8201	CLICK LEAF SPRING HOLDER
43	G26-1501	FRONT PLT	87	F03-2401	CLICK LEAF SPRING
44	F83-4701	BALL BEARING COLLAR	88	150-8901	DRAG SPRING WASHER
45	B86-1702	BALL BEARING C	89	373-7810	SPACING SLEEVE
46	F99-7401	CLUTCH CAM	90	G01-1503	STAR DRAG
47	G26-1001	YOKE PLT	91	F57-6601	FRICTION WASHER
48	G26-2001	CLUTCH CAM SPRING	92	F83-7201	HANDLE
49	G00-9701	CLUTCH CAM SCREW	93	B43-3602	HANDLE NUT
50	G26-1101	CLUTCH TRIP PLT	94	F57-7202	HANDLE NUT RET
51	G26-1101	CLUTCH TRIP PLT	95	G26-2301	PLT
52	371-6906	CLUTCH TRIP PLT WASHER			