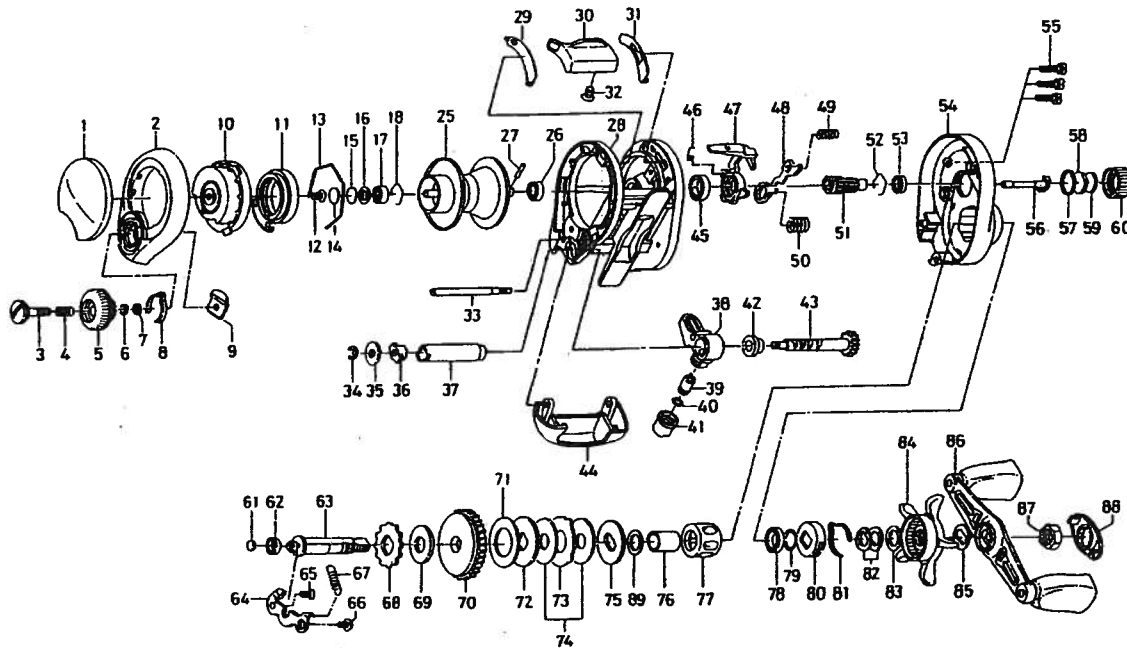


TEAM DAIWA-X100HSDF



| Key No. | Parts No. | Parts Name | Key No. | Parts No. | Parts Name |
|---------|-----------|------------------------|---------|-----------|--------------------------|
| 1 | F57-7504 | L/S PLT A | 50 | E16-7101 | YOKE SPRING B |
| 2 | F74-3106 | L/S PLT B | 51 | F57-5701 | PINION GEAR |
| 3 | F57-7901 | SET PLT SCREW | 52 | E21-9701 | BEARING RET B |
| 4 | E16-7101 | SET PLT SPRING | 53 | F05-5601 | BALL BEARING C |
| 5 | F57-7803 | BRAKE ADJ KNOB | 54 | G18-3302 | R/S PLT |
| 6 | B33-9801 | BRAKE DIAL RET A | 55 | 351-1001 | R/S PLT SCREW |
| 7 | F63-7701 | BRAKE DIAL WASHER | 56 | F74-3001 | PINION SHAFT |
| 8 | F05-1701 | BRAKE CLICK SPRING | 57 | 171-5201 | O RING |
| 9 | F61-3401 | BRAKE DIAL RET B | 58 | B17-5401 | SPOOL ADJ CAP METAL |
| 10 | F71-7802 | LEFT SET PLT | 59 | B17-5503 | SPACER D |
| 11 | F71-7702 | MAGNET HOLDER | 60 | F57-4404 | CAST CONTROL CAP |
| 12 | E29-3001 | LEFT SET PLT SCREW | 61 | F57-5601 | DRIVE SHAFT WASHER A |
| 13 | B54-3201 | MAGNET HOLDER RET RING | 62 | F05-5601 | BALL BEARING D |
| 14 | 375-7404 | SPACER A | 63 | G18-3601 | DRIVE SHAFT |
| 15 | 375-7411 | SPACER B | 64 | F58-2201 | DRIVE SHAFT RET |
| 16 | F57-4303 | SPACER C | 65 | F21-1101 | DRIVE SHAFT RET SCREW A |
| 17 | F57-7703 | BALL BEARING A | 66 | 353-8301 | DRIVE SHAFT RET SCREW B |
| 18 | E21-9701 | BEARING RET A | 67 | F62-0401 | CLUTCH TRIP PLT SPRING |
| 25-27 | G29-2001 | SPOOL | 68 | F76-1701 | A/R RATCHET |
| 28 | G23-2702 | FRAME | 69 | F19-0101 | DRIVE SHAFT WASHER B |
| 29 | F76-1602 | CLUTCH LEVER PLT A | 70 | G18-3401 | DRIVE GEAR |
| 30 | F57-5504 | CLUTCH LEVER | 71 | F79-6201 | DRAG WASHER A |
| 31 | F76-1502 | CLUTCH LEVER PLT B | 72 | F79-6301 | KEY WASHER A |
| 32 | F21-1103 | CLUTCH LEVER SCREW | 73 | F79-6101 | EARED WASHER |
| 33 | F57-3401 | STABILIZER BAR | 74 | F96-7801 | DRAG WASHER B |
| 34 | 320-5901 | WORM SHAFT RET | 75 | F79-6401 | KEY WASHER B |
| 35 | F65-5501 | WORM SHAFT WASHER | 76 | G27-5901 | GEAR SHAFT COLLAR |
| 36 | B71-5601 | WORM SHAFT HOLDER A | 77 | F58-0601 | ROLLER CLUTCH |
| 37 | F90-5001 | LEVEL WIND GUARD | 78 | B86-1702 | BALL BEARING E |
| 38 | F57-5902 | LINE GUIDE | 79 | B55-3801 | BEARING WASHER |
| 39 | 121-4212 | LINE GUIDE PAWL | 80 | F02-8201 | CLICK LEAF SPRING HOLDER |
| 40 | F95-0200 | LINE GUIDE WASHER | 81 | F03-2401 | CLICK LEAF SPRING |
| 41 | 342-4801 | PAWL CAP | 82 | 150-8901 | DRAG SPRING WASHER |
| 42 | F90-5101 | WORM SHAFT HOLDER B | 83 | 373-7810 | SPACING SLEEVE A |
| 43 | F57-6201 | WORM SHAFT | 84 | G19-0101 | STAR DRAG |
| 44 | F57-5210 | FRONT PLT | 85 | F57-6601 | FRICTION WASHER |
| 45 | B86-1702 | BALL BEARING B | 86 | G18-3702 | HANDLE |
| 46 | F56-1901 | CLUTCH CAM SPRING | 87 | B43-3603 | HANDLE NUT |
| 47 | F57-5301 | CLUTCH CAM | 88 | F57-7204 | HANDLE NUT RET |
| 48 | F58-2301 | YOKE | 89 | 373-7810 | SPACING SLEEVE B |
| 49 | F58-8001 | YOKE SPRING A | | | |