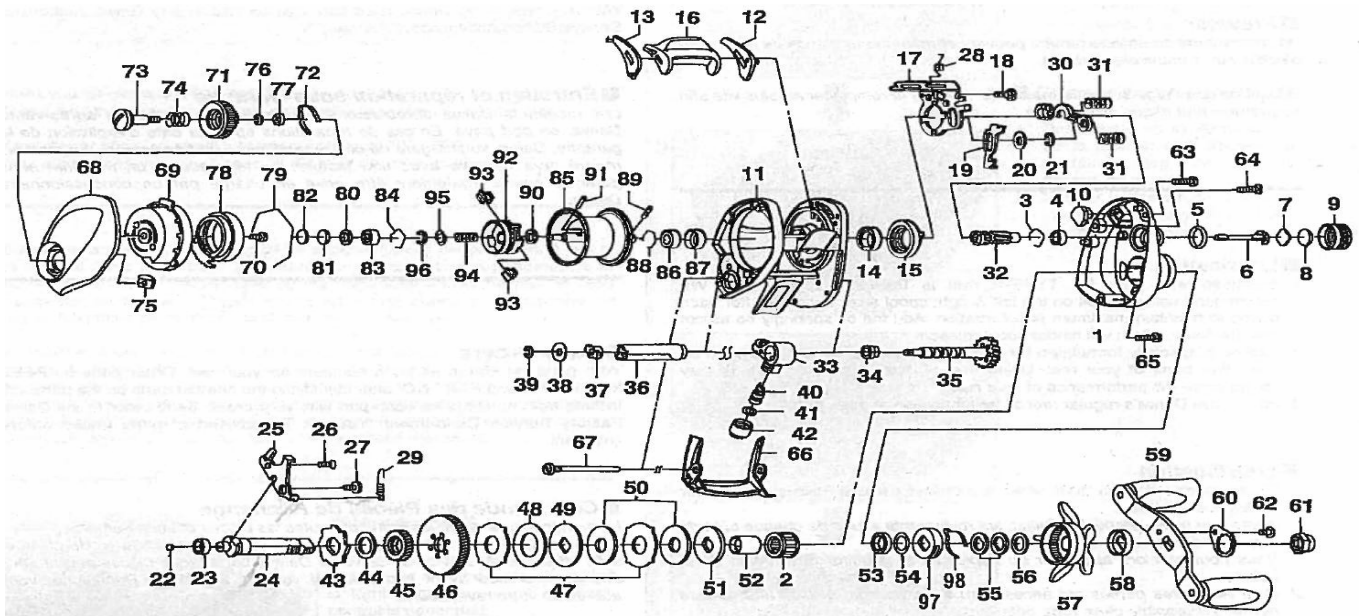


Please order by parts number, not key number  
 Veuillez indiquer le numéro de la pièce (Non "Key" No.)



## BAITCASTING REEL

# PX TYPE-R



Key No.	Parts No.	Parts Name	Key No.	Parts No.	Parts Name
1	H68-9501	Right side plate	45	G01-1201	Drive gear (A)
2	G81-9801	Roller clutch	46	H48-6701	Drive gear (B)
3	E21-9701	Bearing retainer (A)	47	F79-6101	Eared washer
4	F05-5601	Ball bearing (A)	48	G42-8501	Drag washer (A)
5	171-5201	"O"ring	49	F79-6301	Key washer (A)
6	G01-5501	Pinion shaft	50	H03-3002	Drag washer (B)
7	B17-5401	Spool adjusting cap metal	51	B36-0306	Key washer (B)
8	B17-5503	Spacer (A)	52	G01-1401	Gear shaft collar
9	H68-9201	Cast Control cap	53	F58-2501	Ball bearing (D)
10	G26-2301	Clutch cam plate	54	B55-3801	Bearing washer
11	G35-9206	Frame	55	150-8901	Drag spring washer
12	G35-6901	Spacer (B)	55	G69-4201	Spacing sleeve
13	G35-7001	Spacer (C)	57	G77-5111	Star drag
14	B86-1702	Ball bearing (B)	58	H32-6801	Handle collar
15	G35-7101	Clutch cam (A)	59	H68-9701	Handle assembly
16	G35-7202	Clutch lever	60	040-3206	Handle nut plate
17	G35-7301	Clutch cam (B)	61	G79-3307	Handle nut
18	G00-9701	Clutch cam screw	62	353-8301	Handle nut plate screw
19	G35-7401	Clutch trip lever	63	G04-0807	Right side plate screw (A)
20	G53-9400	Washer (A)	64	G04-0805	Right side plate screw (B)
21	320-5901	Retainer	65	G04-0806	Right side plate screw (C)
22	G35-7500	Washer (B)	66	G35-8607	Front plate
23	F05-5601	Ball bearing (C)	67	G35-8701	Stabilizer bar
24	H68-9301	Drive shaft	68	G36-0715	Left side plate
25	G35-7701	Drive shaft retainer	69	G36-3701	Left set plate
26	E13-4503	Drive shaft retainer screw (A)	70	351-0906	Left set plate screw
27	G02-1201	Drive shaft retainer screw (B)	71	G36-0502	Brake adjusting knob
28	G35-7801	Clutch cam spring (A)	72	F05-1701	Brake spring plate screw
29	G01-0201	Clutch cam spring (B)	73	F57-7901	Set plate screw
30	G35-7901	Yoke	74	E16-7101	Set plate spring
31	G35-8001	Yoke spring	75	G84-6201	Brake dial retainer (A)
32	H48-6401	Pinion gear	76	B33-9801	Brake dial retainer (B)
33	G56-4904	Line guide	77	F63-7701	Brake dial washer
34	G41-7801	Bearing	78	F71-7702	Magnet holder
35	G41-8002	Worm shaft assembly	79	B54-3201	Magnet holder retainer
36	F83-6502	Level wind guard	80	F57-4303	Spacer (D)
37	B71-5601	Worm shaft holder	81	375-7411	Spacer (E)
38	F65-5500	Worm shaft washer	82	375-7400	Spacer (F)
39	F55-0501	Worm shaft retainer	83	G43-1102	Ball bearing (E)
40	121-4212	Line guide pawl	84	E21-9701	Bearing retainer (B)
41	313-1300	Line guide washer	85-96	Z02-0547	Spool assembly
42	342-4807	Pawl nut	97	F02-8201	Click leaf spring holder
43	F83-6901	Clutch wheel	98	F03-2401	Click leaf spring
44	E48-9502	Drive shaft washer			