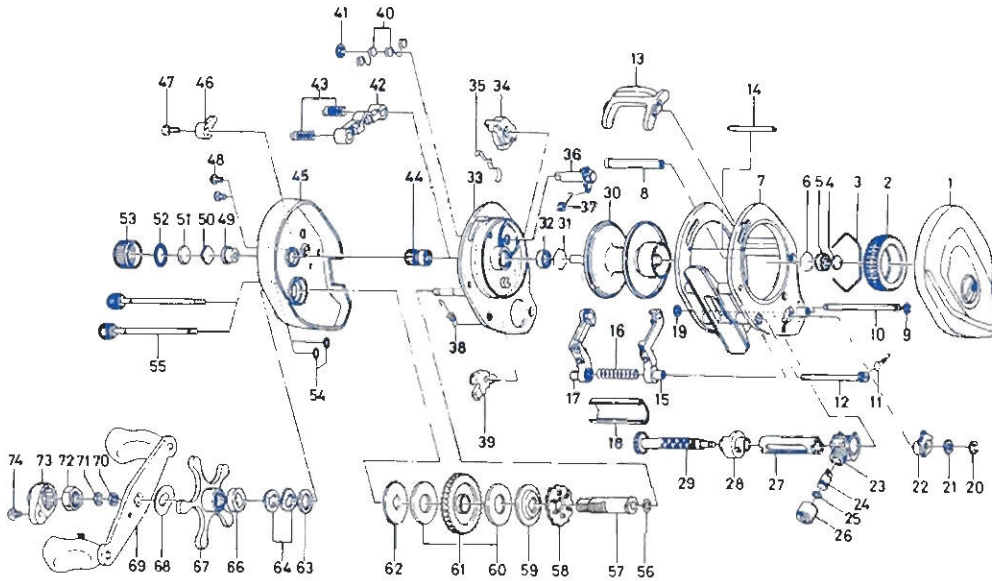


## BAITCASTING REEL PMA35SL



Key No.	Parts No.	Parts Name	Key No.	Parts No.	Parts Name
1	B90-7201	Right side plate	38	B35-8901	Anti-reverse pawl spring
2	B66-1202	Magnet holder	39	B74-0501	Anti-reverse pawl
3	B54-3201	Magnet holder ret. ring	40	B81-5503	Set plate spring
4	375-7405	Spacer	41	320-1402	Clutch ret. ring
5	B55-0301	Bearing	42	B90-6601	Yoke
6	B42-1601	Bearing retainer	43	144-7101	Yoke spring
7	B90-8601	Frame	44	B90-6701	Pinion gear
8	BB5-9603	Frame post A	45	B90-5902	Left side plate
9	BB6-4101	Frame post retainer	46	B85-9501	Click button
10	B92-7101	Frame post B	47	351-1801	Click button screw
11	B86-3901	Frame post spring	48	B36-0401	Set plate screw
12	B92-7501	Frame post screw	49	B64-3101	Bush
13	B85-2303	Clutch lever	50	B17-5401	Spool adjusting cap metal A
14	B93-9101	Frame post C	51	B17-5501	Spool adjusting cap metal B
15	B94-7101	Line guide A	52	171-5201	"O" ring
16	B92-7201	Line guide spring	53	B85-3401	Cast control cap
17	B94-7201	Line guide B	54	B85-3101	Left side plate washer
18	B92-7301	Line guard	55	B91-1702	Left side plate screw
19	B86-4101	Frame post retainer	56	373-7611	Drive shaft washer A
20	320-5901	Worm shaft retainer	57	B86-5001	Drive shaft
21	373-1302	Worm shaft holder washer	58	B90-7001	Anti-reverse ratchet
22	B94-3701	Worm shaft holder	59	B85-4801	Drive shaft washer B
23	B94-7901	Line guide pawl holder	60	B36-0203	Drag washer A
24	B91-2601	Line guide pawl	61	B90-7101	Drive gear
25	375-4100	Line guide washer	62	B36-0301	Key washer
26	342-4801	Pawl cap	63	373-7800	Drag washer B
27	B85-9701	Level wind cap	64	150-8901	Drag spring washer
28	B92-9501	Worm bearing	66	634-5801	Spacing sleeve
29	B92-9601	Worm shaft	67	B36-0504	Star drag
30	B90-8801	Spool	68	150-9001	Friction washer
31	B42-1601	Bearing retainer	69	B85-5101	Handle assembly
32	B55-0301	Bearing	70	B41-1701	Drive shaft washer
33	B90-6101	Set plate	71	320-8202	Drive shaft retainer
34	B90-6901	Anti-reverse cam	72	B86-2101	Handle nut
35	B65-0501	Anti-reverse cam spring	73	B86-2301	Handle nut plate
36	B97-8401	Click claw	74	351-1801	Handle nut plate screw
37	B86-2201	Click claw spring			