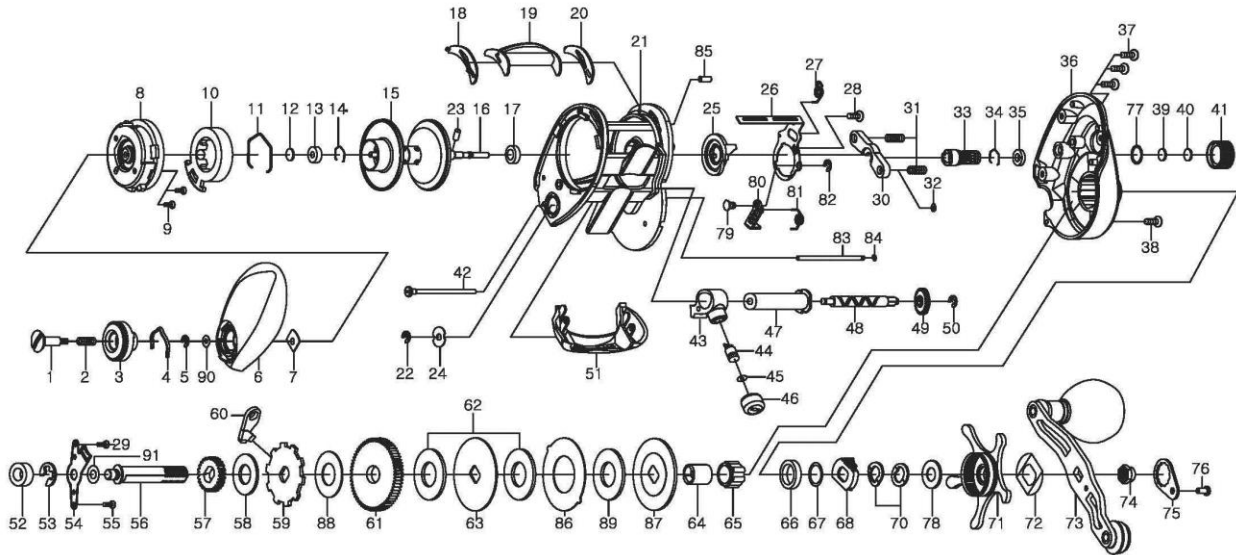




BAITCASTING REEL

LEXA-HD 300HS-P/XS-P/H-P

Please order by parts number, not key number
 Veuillez indiquer le numéro de la pièce (Non "Key" No.)



| KEY No. | PART No. | PART NAME | KEY No. | PART No. | PART NAME |
|---------|----------|--------------------|---------|----------|----------------------|
| 1 | 460-5570 | SET PLT SCREW | 53 | 200-0580 | DRIVE GEAR SHAFT RET |
| 2 | 510-4450 | SET PLT SPRING | 54 | 410-2540 | PLATE |
| 3 | 550-1610 | BRAKE ADJ. KNOB | 55 | 460-5290 | SCREW |
| 4 | 510-5180 | BRAKE CLICK SPRING | 56 | 470-1971 | DRIVE SHAFT |
| 5 | 200-0530 | BRAKE DIAL RET (A) | 57 | 240-2200 | OSC GEAR |
| 6 | 230-2355 | L/S PLT | 58 | 540-7010 | WASHER |
| 7 | 410-1911 | BRAKE DIAL RET (B) | 59 | 240-2550 | A/R RATCHET |
| 8 | 230-2360 | SET PLT | 60 | 530-0860 | A/R PAWL |
| 9 | 460-3220 | SCREW | 61 | 250-1640 | DRIVE GEAR |
| 10 | 240-1952 | MAGNET HOLDER | 62 | 540-6890 | DRAG WASHER |
| 11 | 430-1070 | MAGNET HOLDER RET | 63 | 540-8010 | KEY WASHER |
| 12 | 540-5990 | SPACER (A) | 64 | 150-2200 | GEAR SHAFT COLLAR |
| 13 | 140-1500 | BALL BEARING | 65 | 140-1370 | ROLLET CLUTCH |
| 14 | 430-1061 | BEARING RETAINER | 66 | 140-0570 | BALL BEARING |
| 15-17 | 700-9860 | SPOOL ASSEMBLY | 67 | 540-6340 | SPACING WASHER |
| 18 | 410-1970 | SPACER (B) | 68 | 510-5370 | PLATE |
| 19 | 090-0280 | CLUTCH LEVER | 70 | 540-6890 | DRAG SPRING WASHER |
| 20 | 410-1960 | SPACER © | 71 | 700-7170 | STAR DRAG |
| 21 | 110-1035 | FRAME | 72 | 510-3260 | LEAF SPRING (B) |
| 22 | 200-0530 | RET | 73 | 700-8940 | HANDLE ASSEMBLY |
| 23 | 400-2250 | SPOOL PIN | 74 | 380-2000 | HANDLE NUT |
| 24 | 540-6060 | WORM SHAFT WASHER | 75 | 350-0310 | HANDLE NUT PLT |
| 25 | 170-1261 | CLUTCH CAM | 76 | 460-5390 | SCREW |
| 26 | 410-2620 | PLATE | 77 | 430-1080 | O-RING |
| 27 | 510-5160 | SPRING | 78 | 540-9020 | WASHER |
| 28 | 460-1290 | SCREW | 79 | 400-3310 | KICK LEVER PIN |
| 29 | 460-5370 | SCREW | 80 | 330-2840 | KICK LEVER |
| 30 | 410-2890 | YOKE | 81 | 510-5140 | KICK LEVER SPRING |
| 31 | 510-5190 | YOKE SPRING | 82 | 200-0570 | E-CLIP |
| 32 | 540-6020 | WASHER | 83 | 400-2660 | PILLAR |
| 33 | 260-2152 | PINION GEAR | 84 | 200-1160 | RET |
| 34 | 430-1061 | BEARING RETAINER | 85 | 400-2570 | PIN |
| 35 | 150-2060 | BUSHING | 86 | 540-8030 | WASHER |
| 36 | 230-2345 | R/S PLT | 87 | 540-8020 | KEY WASHER |
| 37 | 460-7010 | SCREW | 88 | 540-7030 | WASHER |
| 38 | 460-5600 | SCREW | 89 | 540-8080 | WASHER |
| 39 | 540-6850 | SPACER (D) | 90 | 540-5380 | WASHER |
| 40 | 540-4340 | SPACER € | 91 | 540-6600 | WASHER |
| 41 | 380-1792 | CAST CONTROL CAP | | | |
| 42 | 460-4980 | LONG SCREW | | | |
| 43 | 490-1080 | LINE GUIDE | | | |
| 44 | 400-2540 | LINE GUIDE PAWL | | | |
| 45 | 540-3980 | WASHER | | | |
| 46 | 380-0780 | LINE PAWL CAP | | | |
| 47 | 270-0810 | LEVEL WING GUARD | | | |
| 48 | 470-1960 | WORM SHAFT | | | |
| 49 | 240-2210 | WORM SHAFT GEAR | | | |
| 50 | 200-0530 | RET | | | |
| 51 | 550-1635 | FRONT PLT | | | |
| 52 | 140-1280 | BALL BEARING | | | |

| LEXA-HD300XS-P SPECIAL PARTS | | |
|------------------------------|----------|-------------|
| KEY No. | PART No. | PART NAME |
| 33 | 260-2221 | PINION GEAR |
| 36 | 230-2346 | R/S PLT |
| 61 | 250-1660 | DRIVE GEAR |

| LEXA-HD300XS-P SPECIAL PARTS | | |
|------------------------------|----------|-------------|
| KEY No. | PART No. | PART NAME |
| 33 | 260-2290 | PINION GEAR |
| 36 | 230-2347 | R/S PLT |
| 61 | 250-1780 | DRIVE GEAR |