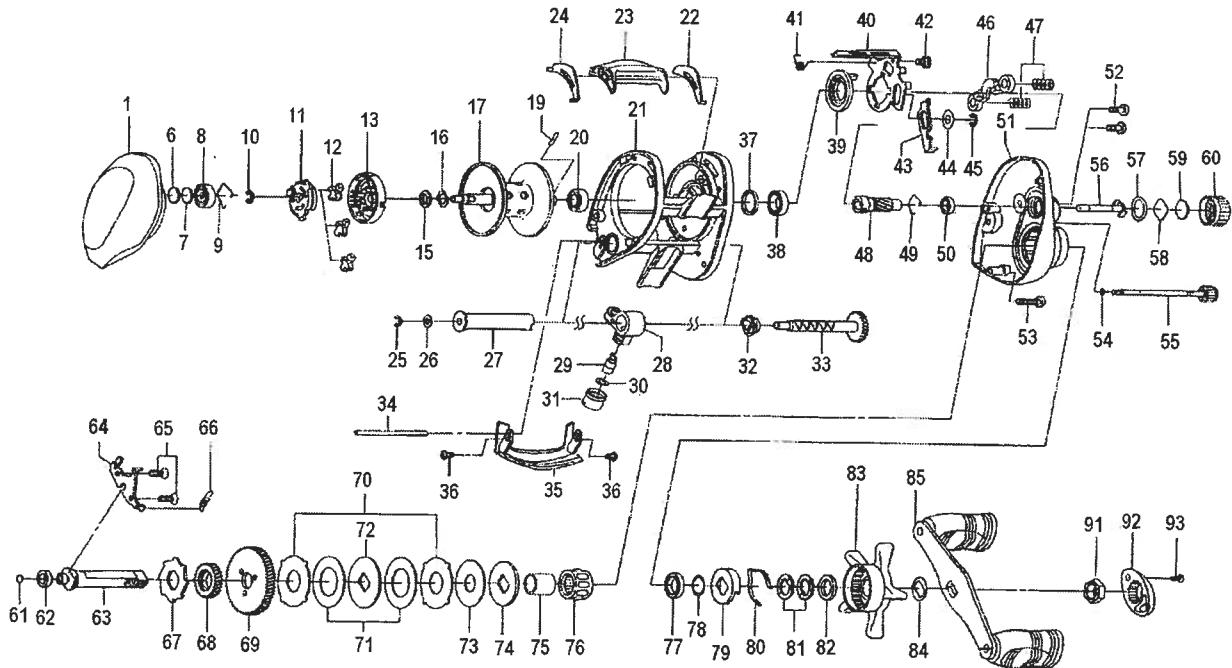


# SPINNING REEL

# COASTAL 153H



Key No.	Parts No.	Parts Name	Key No.	Parts No.	Parts Name
1	G65-2901	L/S PLT	52	G04-0801	R/S PLT SCREW A
6	375-7404	SPACER A	53	G47-3501	R/S PLT SCREW B
7	375-7411	SPACER B	54	B85-3101	O RING A
8	G51-1502	BALL BEARING A	55	B91-1746	R/S PLT SCREW
9	F03-2201	BEARING RET A	56	F80-0501	PINION SHAFT
10-20	Z01-7438	SPOOL	57	171-5201	O RING B
21	G65-2101	FRAME	58	B17-5401	SPOOL ADJ CAP METAL
22	G54-3401	CLUTCH LEVER PLT A	59	B17-5503	RUBBER WASHER
23	G54-3601	CLUTCH LEVER	60	F57-4401	CAST CONTROL CAP
24	G54-3501	CLUTCH LEVER PLT B	61	G35-7506	DRIVE SHAFT WASHER
25	320-5901	WORM SHAFT RET	62	G05-1901	BUSHING
26	373-1306	WORM SHAFT WASHER	63	G65-2701	DRIVE SHAFT
27	G54-4801	LEVEL WIND GUARD	64	G54-4002	DRIVE SHAFT RET
28	G54-4301	LINE GUIDE	65	E13-4508	DRIVE SHAFT RET SCREW
29	121-4212	LINE GUIDE PAWL	66	G01-0201	CLUTCH TRIP PLT SPRING
30	373-1303	LINE GUIDE WASHER	67	F76-1701	A/R RATCHET
31	F40-2801	PAWL CAP	68	G00-1501	DRIVE GEAR A
32	G12-8201	WORM SHAFT COLLAR	69	G54-4901	DRIVE GEAR B
33	G54-4601	WORM SHAFT	70	F79-6101	EARED WASHER
34	G54-5401	STABILIZER BAR	71	G42-8501	DRAG WASHER
35	G54-5303	FRONT PLT	72	F79-6301	KEY WASHER A
36	B36-0401	FRONT PLT SCREW	73	G45-5801	DRAG WASHER B
37	F83-4701	BALL BEARING COLLAR	74	B36-0303	KEY WASHER B
38	G52-0502	BALL BEARING B	75	G01-1401	GEAR SHAFT COLLAR
39	F79-3501	CLUTCH CAM	76	F99-9803	ROLLER CLUTCH
40	G54-3702	CLUTCH CAM B	77	G52-0502	BALL BEARING D
41	G54-4101	CLUTCH CAM SPRING	78	B55-3801	BEARING WASHER
42	G00-9701	CLUTCH CAM SCREW	79	F02-8201	CLICK LEAF SPRING HOLDER
43	G54-3801	CLUTCH TRIP PLT	80	F03-2401	BRAKE CLICK SPRING
44	371-6905	CLUTCH TRIP PLT WASHER	81	150-8901	SPRING WASHER
45	320-1402	CLUTCH TRIP PLT RET	82	B97-4901	SPACING SLEEVE
46	F79-4801	YOKE	83	G65-2201	STAR DRAG
47	G59-7301	YOKE SPRING	84	150-9001	FRICTION WASHER
48	G54-4202	PINION GEAR	85	G59-8702	HANDLE
49	E21-9701	BEARING RET B	91	B86-2102	HANDLE NUT
50	G46-6201	BALL BEARING C	92	E44-0008	HANDLE NUT PLT
51	G54-2707	R/S PLT	93	351-1801	HANDLE NUT PLT SCREW