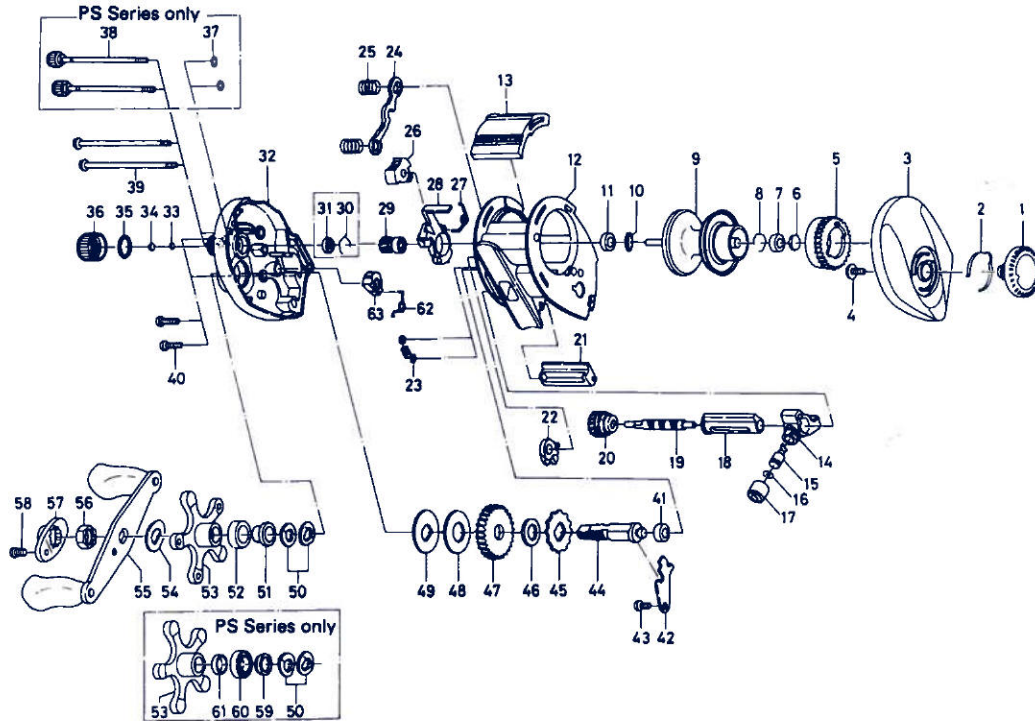


BAITCASTING REEL – BW2L, EL2L, PS2L-2B, PS2L-5B

(Special Parts, EL2L, PS2L-2B, PS2L-5B — continued on page 92.)



Key No.

Part No. Part Name

BW2L Parts:

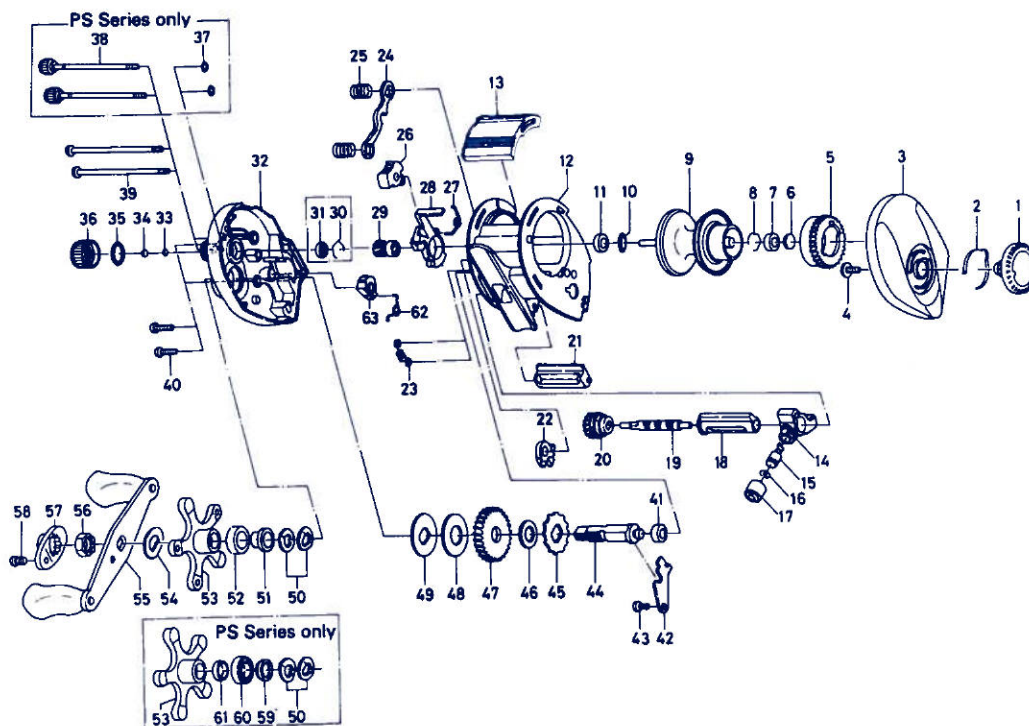
- 1 F05-5802 Brake adjusting knob
- 2 F03-2401 Brake click spring
- 3 F12-3701 Right side plate
- 4 B84-2102 Brake adjusting knob screw
- 5 E23-9501 Magnet holder
- 6 375-7400 Spacer A
- 7 B55-0301 Bushing A
- 8 B42-1601 Bearing retainer A
- 9 F06-2101 Spool assembly
- 10 F12-0701 Ball bearing retaining ring
- 11 E35-1501 Bushing A
- 12 F12-1101 Frame assembly
- 13 F05-4001 Clutch lever
- 14 E16-6301 Line guide
- 15 121-4212 Line guide pawk
- 16 375-4101 Line guide washer
- 17 342-4801 Pawl cap
- 18 E28-4701 Level wind guard
- 19 E45-1201 Worm shaft
- 20 F08-5301 Worm shaft gear
- 21 F05-3901 Line guard
- 22 E23-8001 Anti-reverse pawl
- 23 E16-5801 Clutch trip plate spring
- 24 E23-7701 Yoke
- 25 E16-7101 Yoke spring
- 26 E24-9101 Flipping/casting selector
- 27 E28-4101 Clutch cam spring
- 28 E28-4001 Clutch cam

Key No.

Part No. Part Name

- 29 E42-7501 Pinion gear
- 32 F06-1809 Left side plate
- 33 E16-9203 Spool adjusting cap metal
- 34 E17-0501 Spacer B
- 35 171-5201 "O" ring A
- 36 E23-8401 Cast control cap
- 39 E28-4901 Right side plate screw
- 40 E33-0401 Set plate screw
- 41 B55-0301 Bushing A
- 42 E23-7601 Drive shaft retainer
- 43 B83-4402 Drive shaft retainer screw
- 44 E23-7505 Drive shaft
- 45 E32-7701 Anti-reverse ratchet
- 46 375-7103 Drive shaft washer
- 47 E20-6102 Drive gear
- 48 B36-0202 Drag washer
- 49 B36-0301 Key washer
- 50 150-8901 Drag spring washer
- 51 E32-6401 Spacing sleeve A
- 52 E34-6801 Spacing sleeve B
- 53 E23-8701 Star drag
- 54 150-9001 Friction washer
- 55 E30-5201 Handle assembly
- 56 B43-3601 Handle nut
- 57 F05-4401 Handle nut plate
- 58 351-1801 Handle nut plate screw
- 62 E30-9602 Anti-reverse lever spring
- 63 E30-9501 Anti-reverse lever

BAITCASTING REEL – BW2L, EL2L, PS2L-2B, PS2L-5B



Key
No. Part No. Part Name

EL2L Special Parts:

- 1 F06-0102 Brake adjusting knob
- 3 F12-3704 Right side plate
- 11 B35-8601 Ball bearing
- 12 F12-1102 Frame assembly
- 21 F05-3902 Line guard
- 32 F06-1812 Left side plate
- 53 E23-8702 Star drag
- 55 E30-5203 Handle assembly

PS2L-2B Special Parts:

- 1 F06-0402 Brake adjusting knob
- 3 F12-3702 Right side plate
- 9 F06-0603 Spool assembly
- 11 B35-8601 Ball bearing A
- 12 F12-1102 Frame assembly
- 13 F06-0201 Clutch lever
- 21 F05-3902 Line guard
- 32 F06-1811 Left side plate
- 37 B85-3101 "O" ring B
- 38 B91-1712 Left side plate screw
- 53 F06-0301 Star drag
- 55 E30-5203 Handle assembly
- 58 351-1803 Handle nut plate screw
- 59 E20-8501 Spacing sleeve A
- 60 E15-4001 Ball bearing B
- 61 B97-4901 Spacing sleeve B

Key
No. Part No. Part Name

PS2L-5B Special Parts:

- 1 F06-0902 Brake adjusting knob
- 3 F12-3703 Right side plate
- 7 B35-8601 Ball bearing A
- 9 F06-0603 Spool assembly
- 11 B35-8601 Ball bearing A
- 12 F12-1102 Frame assembly
- 13 F06-0201 Clutch lever
- 21 F05-3902 Line guard
- 30 E21-9701 Bearing retainer
- 31 E24-8501 Ball bearing B
- 32 F06-1808 Left side plate
- 37 B85-3101 "O" ring B
- 38 B91-1712 Left side plate screw
- 41 B35-8601 Ball bearing A
- 53 F08-0303 Star drag
- 58 351-1803 Handle nut plate screw
- 59 E20-8501 Spacing sleeve A
- 60 E15-4001 Ball bearing C
- 61 B97-4901 Spacing sleeve B