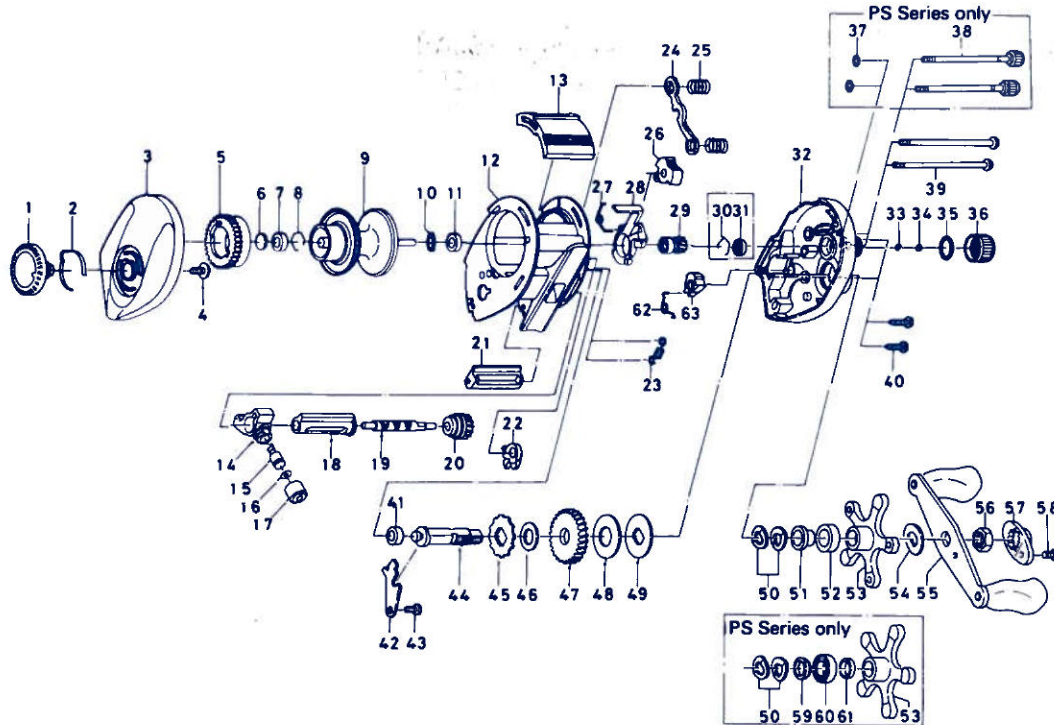


# BAITCASTING REEL — BW2, EL2, EL2C, PS2-2B, PS2-5B

(Special Parts, EL2, EL2C, PS2-2B, PS2-5B — continued on page 90.)



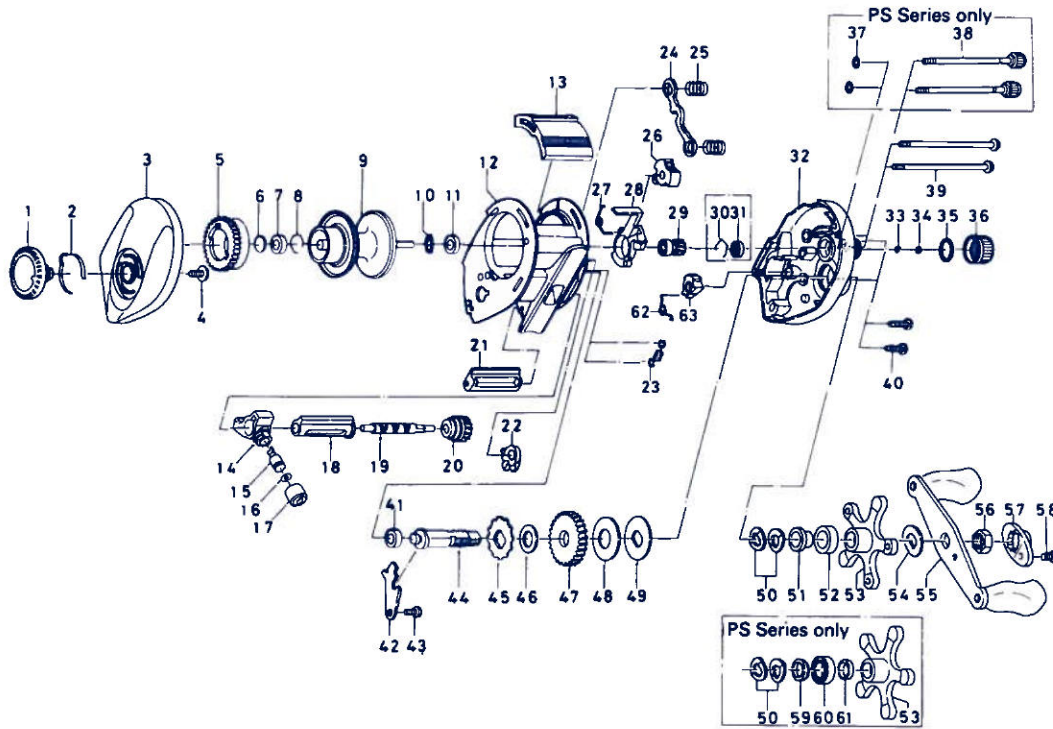
**Key  
No.**

Key No.	Part No.	Part Name
1	F05-5801	Brake adjusting knob
2	F03-2401	Brake click spring
3	F05-4501	Left side plate
4	B84-2102	Brake adjusting knob screw
5	E23-9501	Magnet holder
6	375-7405	Spacer A
7	B55-0301	Bushing A
8	B42-1601	Bearing retainer A
9	F05-4901	Spool assembly
10	F12-0701	Ball bearing retaining ring
11	E35-1501	Bushing B
12	F05-3701	Frame assembly
13	F05-4001	Clutch lever
14	E16-6301	Line guide
15	121-4212	Line guide pawl
16	375-4101	Line guide washer
17	342-4801	Pawl cap
18	E31-2001	Lever wind guard
19	E45-1201	Worm shaft
20	F08-5201	Worm shaft gear
21	F05-3901	Line guard
22	E23-8001	Anti-reverse pawl
23	E16-5801	Clutch trip plate spring
24	E23-7701	Yoke
25	E16-7101	Yoke spring
26	E24-9101	Flipping / casting selector
27	E24-9001	Clutch cam spring
28	E23-7401	Clutch cam

**Key  
No.**

Key No.	Part No.	Part Name
29	E42-0901	Pinion gear
32	F05-4217	Right side plate
33	E16-9201	Spool adjusting cap metal
34	E17-0501	Spacer B
35	171-5201	"O" ring A
36	E23-8401	Cast control cap
39	E28-4901	Right side plate screw A
40	E33-0401	Set plate screw
41	B55-0301	Bushing A
42	E23-7601	Drive shaft retainer
43	B83-4402	Drive shaft retainer screw
44	E23-7501	Drive shaft
45	E32-7701	Anti-reverse ratchet
46	375-7103	Drive shaft washer
47	F12-6701	Drive gear
48	B36-0202	Drag washer
49	B36-0301	Key washer
50	150-8901	Drag spring washer
51	E32-6401	Spacing sleeve A
52	E34-6801	Spacing sleeve B
53	E23-8701	Star drag
54	150-9001	Friction washer
55	E30-5201	Handle assembly
56	B43-3601	Handle nut
57	F05-4401	Handle nut plate
58	351-1801	Handle nut plate screw
62	F12-0501	Anti-reverse lever spring
63	E30-9501	Anti-reverse lever

# BAITCASTING REEL – BW2, EL2, EL2C, PS2-2B, PS2-5B



**Key**

No.	Part No.	Part Name
<b>EL2 Special Parts:</b>		
1	F06-0101	Brake adjusting knob
3	F05-4506	Left side plate
11	B35-8601	Ball bearing
12	F05-3702	Frame assembly
21	F05-3902	Line guard
32	F05-4219	Right side plate
53	E23-8702	Star drag
55	E30-5203	Handle assembly

**EL2C Special Parts:**

1	F06-0101	Brake adjusting knob
3	F05-4507	Left side plate
11	B35-8601	Ball bearing
12	F05-3702	Frame assembly
20	F06-1301	Worm shaft gear
21	F05-3902	Line guard
29	E42-7701	Pinion gear
32	F05-4220	Right side plate
47	E42-7601	Drive gear
48	B30-9102	Drag washer
49	F06-6701	Key washer
53	E23-8702	Star drag
55	E30-5203	Handle assembly

**PS2-2B Special Parts:**

1	F06-0401	Brake adjusting knob
3	F05-4503	Left side plate
9	F06-0601	Spool assembly
11	B35-8601	Ball bearing A
12	F05-3702	Frame assembly
13	F06-0201	Clutch lever

**Key**

No.	Part No.	Part Name
21	F05-3902	Line guard
32	F05-4218	Right side plate
37	B85-3101	"O" ring B
38	B91-1712	Right side plate screw B
53	F06-0301	Star drag
55	E30-5203	Handle assembly
58	351-1803	Handle nut plate screw
59	E20-8501	Spacing sleeve A
60	E15-4001	Ball bearing B
61	B97-4901	Spacing sleeve B

**PS2-5B Special Parts:**

1	F06-0901	Brake adjusting knob
3	F05-4504	Left side plate
7	B35-8601	Ball bearing A
9	F06-0601	Spool assembly
11	B35-8601	Ball bearing A
12	F05-3702	Frame assembly
13	F06-0201	Clutch lever
21	F05-3902	Line guard
30	E21-9701	Bearing retainer
31	E24-8501	Ball bearing B
32	F05-4209	Right side plate
37	B85-3101	"O" ring B
38	B91-1712	Right side plate screw B
41	B35-8601	Ball bearing A
53	F06-0303	Star drag
58	351-1803	Handle nut plate screw
59	E20-8501	Spacing sleeve A
60	E15-4001	Ball bearing C
61	B97-4901	Spacing sleeve B